

## Recombinant Human DLL3 protein, His-tagged

Cat. No. DLL3-5654H Lot. No. (See product label)

### SPECIFICATION

<b>Product Overview</b>	Recombinant Human DLL3 protein(Q9NYJ7-1)(Ala27-Arg490), fused with N-terminal His tag, was expressed in HEK293.
<b>Species</b>	Human
<b>Source</b>	HEK293
<b>ProteinLength</b>	Ala27-Arg490
<b>Tag</b>	N-His
<b>Form</b>	Lyophilized from 0.22µm filtered solution in PBS, 200mM Arginine (pH 7.4). Normally 8% trehalose is added as protectant before lyophilization.
<b>Bio-activity</b>	Immobilized Human DLL3, His Tag at 1 µg/mL (100 µl/well). Dose response curve for Anti-DLL3 Antibody, hFc Tag with the EC50 of 1.2 ng/ml determined by ELISA.
<b>Molecular Mass</b>	The protein has a predicted MW of 50.4 kDa. Due to glycosylation, the protein migrates to 52-60 kDa based on Tris-Bis PAGE result.
<b>Endotoxin</b>	Less than 1EU per µg by the LAL method.
<b>Purity</b>	> 95% as determined by Tris-Bis PAGE; > 95% as determined by HPLC
<b>Storage</b>	Reconstituted protein stable at -80°C for 12 months, 4°C for 1 week. Use a manual

 Tel: 1-631-559-9269 1-516-512-3133

 Email: [info@creative-biomart.com](mailto:info@creative-biomart.com)  Fax: 1-631-938-8127

 45-1 Ramsey Road, Shirley, NY 11967, USA

defrost freezer and avoid repeated freeze-thaw cycles.

**Reconstitution**

Centrifuge tubes before opening. Reconstituting to a concentration more than 100 µg/ml is recommended. Dissolve the lyophilized protein in distilled water.

**GENE INFORMATION**

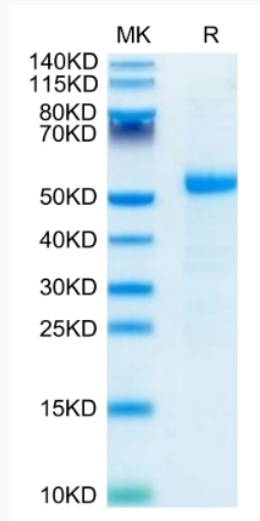
<b>Gene Name</b>	DLL3 delta-like 3 (Drosophila) [ Homo sapiens ]
<b>Official Symbol</b>	DLL3
<b>Synonyms</b>	DLL3; delta-like 3 (Drosophila); delta (Drosophila) like 3; delta-like protein 3; SCDO1; delta3; drosophila Delta homolog 3;
<b>Gene ID</b>	10683
<b>mRNA Refseq</b>	NM_016941
<b>Protein Refseq</b>	NP_058637
<b>MIM</b>	602768
<b>UniProt ID</b>	Q9NYJ7

 Tel: 1-631-559-9269 1-516-512-3133

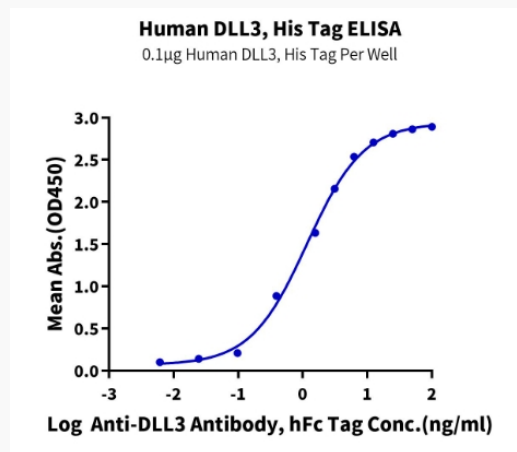
 Email: [info@creative-biomart.com](mailto:info@creative-biomart.com)  Fax: 1-631-938-8127

 45-1 Ramsey Road, Shirley, NY 11967, USA

**Tris-Bis PAGE**



**ELISA Data**



 Tel: 1-631-559-9269 1-516-512-3133

 Email: [info@creative-biomart.com](mailto:info@creative-biomart.com)  Fax: 1-631-938-8127

 45-1 Ramsey Road, Shirley, NY 11967, USA