

Recombinant Human DLL3 protein, MBP&His-Avi-tagged, Biotinylated

Cat. No. DLL3-866H **Lot. No.** (See product label)

SPECIFICATION

Product Overview	Biotinylated Recombinant Human DLL3 protein(Q9NYJ7)(429-492aa), fused with N-terminal MBP tag and C-terminal His and Avi tag, was expressed in E.coli.
Species	Human
Source	E.coli
ProteinLength	429-492a.a.
Tag	MBP&His&Avi
Conjugation/Label	Biotin
Form	If the delivery form is liquid, the default storage buffer is Tris/PBS-based buffer, 5%-50% glycerol. If the delivery form is lyophilized powder, the buffer before lyophilization is Tris/PBS-based buffer, 6% Trehalose, pH 8.0.
Molecular Mass	54.4 kDa
Purity	Greater than 90% as determined by SDS-PAGE.
Storage	Store at -20°C/-80°C upon receipt, aliquoting is necessary for mutiple use. Avoid repeated freeze-thaw cycles.

 Tel: 1-631-559-9269 1-516-512-3133

 Email: info@creative-biomart.com  Fax: 1-631-938-8127

 45-1 Ramsey Road, Shirley, NY 11967, USA

Reconstitution We recommend that this vial be briefly centrifuged prior to opening to bring the contents to the bottom. Please reconstitute protein in deionized sterile water to a concentration of 0.1-1.0 mg/mL. We recommend to add 5-50% of glycerol (final concentration) and aliquot for long-term storage at -20°C/-80°C.

AA Sequence RADPCAARPCAHGGRCYAHFSGLVACAPGYMGARCEFPVHPDGASALPAAPPGL
RPGDPQRYL

Conjugation Biotin

GENE INFORMATION

Gene Name [DLL3 delta-like 3 \(Drosophila\) \[Homo sapiens \]](#)

Official Symbol [DLL3](#)

Synonyms DLL3; delta-like 3 (Drosophila); delta (Drosophila) like 3; delta-like protein 3; SCDO1; delta3; drosophila Delta homolog 3;

Gene ID [10683](#)

mRNA Refseq [NM_016941](#)

Protein Refseq [NP_058637](#)

MIM [602768](#)

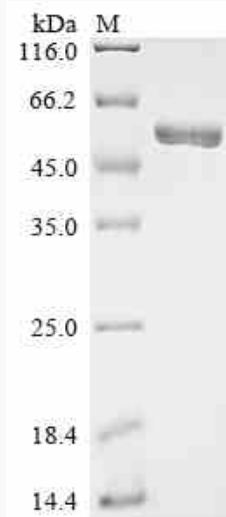
UniProt ID [Q9NYJ7](#)

 Tel: 1-631-559-9269 1-516-512-3133

 Email: info@creative-biomart.com  Fax: 1-631-938-8127

 45-1 Ramsey Road, Shirley, NY 11967, USA

SDS-PAGE



 Tel: 1-631-559-9269 1-516-512-3133

 Email: info@creative-biomart.com  Fax: 1-631-938-8127

 45-1 Ramsey Road, Shirley, NY 11967, USA