

Recombinant Human DLL3 Protein, His-flag-tagged

Cat. No. DLL3-965H Lot. No. (See product label)

SPECIFICATION

Product Overview	Recombinant Human DLL3 is expressed from Mammalian with a His tag and flag tag at the N-terminal. It contains Ala27-Arg491.
Species	Human
Source	HEK293
ProteinLength	Ala27-Arg491
Description	Delta-like 3 (Drosophila), also known as DLL3, is a protein which in humans is encoded by the DLL3 gene. Two transcript variants encoding distinct isoforms have been identified for this gene. Mutations in this gene cause the autosomal recessive genetic disorder Jarcho-Levin syndrome. Expression of the gene occurs in Neuroendocrine tumors, which has been targeted as a potential pathway for treatment.
Form	Supplied as 0.22um filtered solution in 20mM PB , 50mM Nacl and 10% glycerol (pH 8.0).
Endotoxin	Less than 0.01 EU per ug by the LAL method.
Purity	> 95% as determined by Tris-Bis PAGE. > 95% as determined by HPLC.
Storage	The product should be stored at -70°C. Please do not repeated freeze-thaw cycles.

 Tel: 1-631-559-9269 1-516-512-3133

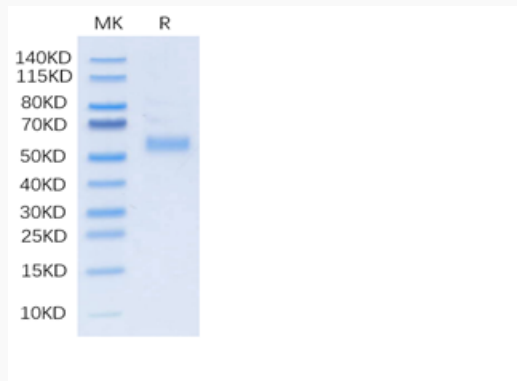
 Email: info@creative-biomart.com  Fax: 1-631-938-8127

 45-1 Ramsey Road, Shirley, NY 11967, USA

GENE INFORMATION

Gene Name	DLL3 delta like canonical Notch ligand 3 [Homo sapiens (human)]
Official Symbol	DLL3
Synonyms	SCDO1
Gene ID	10683
mRNA Refseq	NM_016941.4
Protein Refseq	NP_058637.1
MIM	602768
UniProt ID	Q9NYJ7

**Tris-Bis PAGE of
DLL3-965H**

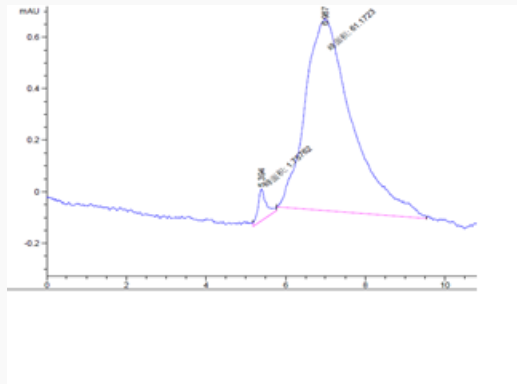


 Tel: 1-631-559-9269 1-516-512-3133

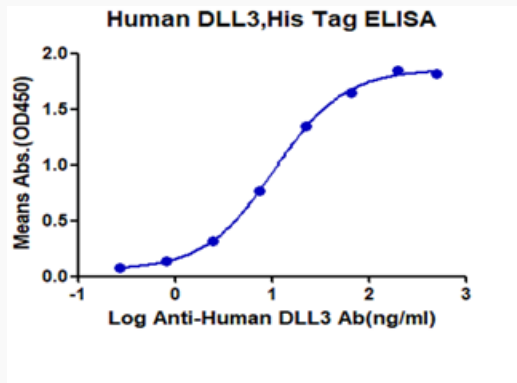
 Email: info@creative-biomart.com  Fax: 1-631-938-8127

 45-1 Ramsey Road, Shirley, NY 11967, USA

SEC-HPLC of DLL3-965H



ELISA of DLL3-965H



 Tel: 1-631-559-9269 1-516-512-3133

 Email: info@creative-biomart.com  Fax: 1-631-938-8127

 45-1 Ramsey Road, Shirley, NY 11967, USA