

Recombinant Human DLL4 Protein, GST-tagged

Cat. No. DLL4-2687H Lot. No. (See product label)

SPECIFICATION

Product Overview	Human DLL4 partial ORF (NP_061947, 123 a.a. - 221 a.a.) recombinant protein with GST-tag at N-terminal.
Species	Human
Source	Wheat Germ
Description	This gene is a homolog of the Drosophila delta gene. The delta gene family encodes Notch ligands that are characterized by a DSL domain, EGF repeats, and a transmembrane domain. [provided by RefSeq, Jul 2008]
Molecular Mass	36.63 kDa
AA Sequence	HAPGDDLRPEALPPDALISKIAIQGSLAVGQNWLLDEQTSTLTRLRYSYRVICSDNY GDNCSRLCKKRNDHFGHYVCQPDGNLSCLPGWTGEYCQQPI
Applications	Enzyme-linked Immunoabsorbent Assay Western Blot (Recombinant protein) Antibody Production Protein Array
Notes	Best use within three months from the date of receipt of this protein.
Storage	Store at -80 centigrade. Aliquot to avoid repeated freezing and thawing.

 Tel: 1-631-559-9269 1-516-512-3133

 Email: info@creative-biomart.com  Fax: 1-631-938-8127

 45-1 Ramsey Road, Shirley, NY 11967, USA

Storage Buffer 50 mM Tris-HCl, 10 mM reduced Glutathione, pH=8.0 in the elution buffer.

GENE INFORMATION

Gene Name DLL4 delta-like 4 (Drosophila) [Homo sapiens]

Official Symbol DLL4

Synonyms DLL4; delta-like 4 (Drosophila); delta like 4 homolog (Drosophila); delta-like protein 4; delta4; delta 4; delta ligand 4; notch ligand DLL4; delta-like 4 homolog; delta-like 4 protein; notch ligand delta-2; drosophila Delta homolog 4; hdelta2; MGC126344;

Gene ID 54567

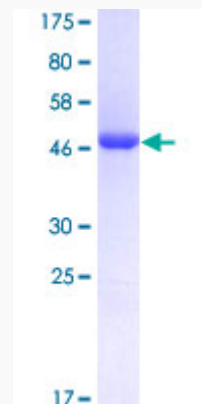
mRNA Refseq NM_019074

Protein Refseq NP_061947

MIM 605185

UniProt ID Q9NR61

Quality Control Testing



Tel: 1-631-559-9269 1-516-512-3133

Email: info@creative-biomart.com Fax: 1-631-938-8127

45-1 Ramsey Road, Shirley, NY 11967, USA



12.5% SDS-PAGE Stained with Coomassie Blue.

 Tel: 1-631-559-9269 1-516-512-3133

 Email: info@creative-biomart.com  Fax: 1-631-938-8127

 45-1 Ramsey Road, Shirley, NY 11967, USA