

## Recombinant Human DLST Protein, GST-tagged

**Cat. No.** DLST-2688H    **Lot. No.** (See product label)

### SPECIFICATION

<b>Product Overview</b>	Human DLST full-length ORF ( NP_001924.2, 1 a.a. - 453 a.a.) recombinant protein with GST-tag at N-terminal.
<b>Species</b>	Human
<b>Source</b>	Wheat Germ
<b>Description</b>	This gene encodes a mitochondrial protein that belongs to the 2-oxoacid dehydrogenase family. This protein is one of the three components (the E2 component) of the 2-oxoglutarate dehydrogenase complex that catalyzes the overall conversion of 2-oxoglutarate to succinyl-CoA and CO(2). Alternatively spliced transcript variants have been found for this gene. [provided by RefSeq, Oct 2011]
<b>Molecular Mass</b>	75.2 kDa
<b>AA Sequence</b>	<p>MLSRSRCVSRAFSRSLSAFQKGNCPGRRSLPGVSLCQGGYPNSRKVVINNSVFS  VRFFRTTAVCKDDLVTVKTPAFAESVTEGDVRWEKAVGDTVAEDEVVCEIETDKTSV  QVPSPANGVIEALLVPDGGKVEGGTPLFTLRKTGAAPAKAKPAEAPAAAAPKAEPTA  AAVPPPAPIPTQMPPVSPSPQPPSGKPVSAVKPTVAPPLAEPGAGKGLRSEHREK  MNRMRQRIQRLKEAQNTCAMLTTFNEIDMSNIQEMRARHKEAFLKKHNLKLGFMS  AFVKASAFALQEQPVVNAVIDDTTKEVVYRDYIDISVAVATPRGLVVPVIRNVEAMNF  ADIERTITELGEKARKNELAIEDMDGGTFTISNGGVFGSLFGTPIINPPQSAILGMHGIF  DRPVAIGGKVEVRPMMYVALTYDHRLIDGREAVTFLRKIKAAVEDPRVLLLDL</p>
<b>Applications</b>	Enzyme-linked Immunoabsorbent Assay

 Tel: 1-631-559-9269    1-516-512-3133

 Email: [info@creative-biomart.com](mailto:info@creative-biomart.com)     Fax: 1-631-938-8127

 45-1 Ramsey Road, Shirley, NY 11967, USA

Western Blot (Recombinant protein)  
 Antibody Production  
 Protein Array

<b>Notes</b>	Best use within three months from the date of receipt of this protein.
<b>Storage</b>	Store at -80 centigrade. Aliquot to avoid repeated freezing and thawing.
<b>Storage Buffer</b>	50 mM Tris-HCl, 10 mM reduced Glutathione, pH=8.0 in the elution buffer.

## GENE INFORMATION

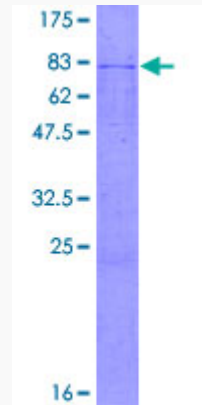
<b>Gene Name</b>	DLST dihydrolipoamide S-succinyltransferase (E2 component of 2-oxo-glutarate complex) [ Homo sapiens ]
<b>Official Symbol</b>	DLST
<b>Synonyms</b>	DLST; dihydrolipoamide S-succinyltransferase (E2 component of 2-oxo-glutarate complex); DLTS; dihydrolipoamide succinyltransferase component of 2-oxoglutarate dehydrogenase complex, mitochondrial; E2K; OGDC-E2;
<b>Gene ID</b>	1743
<b>mRNA Refseq</b>	NM_001244883
<b>Protein Refseq</b>	NP_001231812
<b>MIM</b>	126063
<b>UniProt ID</b>	P36957

 Tel: 1-631-559-9269 1-516-512-3133

 Email: [info@creative-biomart.com](mailto:info@creative-biomart.com)  Fax: 1-631-938-8127

 45-1 Ramsey Road, Shirley, NY 11967, USA

**Quality Control  
Testing**



12.5% SDS-PAGE Stained with Coomassie Blue.

 Tel: 1-631-559-9269 1-516-512-3133

 Email: [info@creative-biomart.com](mailto:info@creative-biomart.com)  Fax: 1-631-938-8127

 45-1 Ramsey Road, Shirley, NY 11967, USA