

Recombinant Human DLST protein, GST-tagged

Cat. No. DLST-896H Lot. No. (See product label)

SPECIFICATION

Product Overview	Recombinant Human DLST protein(212-366 aa), fused with N-terminal GST tag, was expressed in E. coli.
Species	Human
Source	E. coli
ProteinLength	212-366 aa
Form	The purified protein was lyophilized from sterile phosphate-buffered saline (PBS: 58 mM Na ₂ HPO ₄ , 17 mM NaH ₂ PO ₄ , 68 mM NaCl, pH 8.0). Prior to lyophilization, 5% (w/v) trehalose and 5% (w/v) mannitol were incorporated as cryoprotective excipients. The protein was eluted with a buffer containing 100 mM reduced glutathione (GSH).
AASequence	EPGAGKGLRSEHREKMNRMRQRIAQRLKEAQNTCAMLTTFNEIDMSNIQEMRARH KEAFLKKHNLKLGFM SAFVKASAFALQEQPVVNAVIDD TTKEVVYRDYIDISVAVATP RGLVVPVIRNVEAMNFADIERTITELGEKARKNELAIEDMDG
Purity	85%, by SDS-PAGE.
Storage	Store at 2-8°C for 1-2 weeks. Aliquot and store at -20°C to -80°C for up to 3 months, reconstitution with sterile water and addition of an equal volume of glycerol. Avoid repeat freeze-thaw cycles.

 Tel: 1-631-559-9269 1-516-512-3133

 Email: info@creative-biomart.com  Fax: 1-631-938-8127

 45-1 Ramsey Road, Shirley, NY 11967, USA



Reconstitution It is recommended that sterile water be added to the vial to prepare a stock solution of 0.25 ug/ul. Centrifuge the vial at 4°C before opening to recover the entire contents.

GENE INFORMATION

Gene Name DLST dihydrolipoamide S-succinyltransferase (E2 component of 2-oxo-glutarate complex) [Homo sapiens]

Official Symbol DLST

Synonyms DLST; dihydrolipoamide S-succinyltransferase (E2 component of 2-oxo-glutarate complex); DLTS; dihydrolipoyllysine-residue succinyltransferase component of 2-oxoglutarate dehydrogenase complex, mitochondrial; E2K; OGDC-E2;

mRNA Refseq NM_001244883

Protein Refseq NP_001231812

MIM 126063

UniProt ID P36957

Gene ID 1743

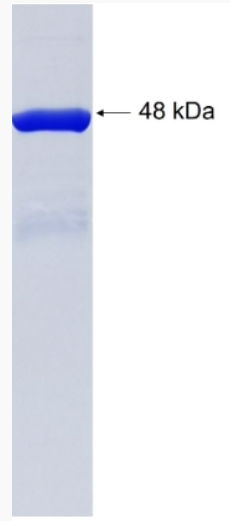
 Tel: 1-631-559-9269 1-516-512-3133

 Email: info@creative-biomart.com  Fax: 1-631-938-8127

 45-1 Ramsey Road, Shirley, NY 11967, USA



SDS-PAGE



Tel: 1-631-559-9269 1-516-512-3133

Email: info@creative-biomart.com Fax: 1-631-938-8127

45-1 Ramsey Road, Shirley, NY 11967, USA