

Recombinant Human DLX1 Protein, GST-tagged

Cat. No. DLX1-2690H **Lot. No.** (See product label)

SPECIFICATION

Product Overview	Human DLX1 full-length ORF (NP_835221.2, 1 a.a. - 255 a.a.) recombinant protein with GST-tag at N-terminal.
Species	Human
Source	Wheat Germ
Description	This gene encodes a member of a homeobox transcription factor gene family similar to the Drosophila distal-less gene. The encoded protein is localized to the nucleus where it may function as a transcriptional regulator of signals from multiple TGF- β superfamily members. The encoded protein may play a role in the control of craniofacial patterning and the differentiation and survival of inhibitory neurons in the forebrain. This gene is located in a tail-to-tail configuration with another member of the family on the long arm of chromosome 2. Alternatively spliced transcript variants encoding different isoforms have been described. [provided by RefSeq, Jul 2008]
Molecular Mass	53.7 kDa
AA Sequence	MTMTMPESLNSPVSGKAVFMEFGPPNQQMSPSPMSHGHYSMHCLHSAGHSQPD GAYSSASSFSRPLGYPYVNSVSSHASSPYISSVQSYPGSASLAQSRLEDPGADSEK STVVEGGEVRFNGKGGKIRKPRTIYSSLQLQALNRRFQQTQYLALPERAELAASLGL TQTQVKIWFQNKRSKFKKLMKQGGAALEGSALANGRALSAGSPPVPPGWNPNSSS GKGSNGSYIPSYTSWYPSAHQEAMQQPQLM
Applications	Enzyme-linked Immunoabsorbent Assay

 Tel: 1-631-559-9269 1-516-512-3133

 Email: info@creative-biomart.com  Fax: 1-631-938-8127

 45-1 Ramsey Road, Shirley, NY 11967, USA

Western Blot (Recombinant protein)
 Antibody Production
 Protein Array

Notes	Best use within three months from the date of receipt of this protein.
Storage	Store at -80 centigrade. Aliquot to avoid repeated freezing and thawing.
Storage Buffer	50 mM Tris-HCl, 10 mM reduced Glutathione, pH=8.0 in the elution buffer.

GENE INFORMATION

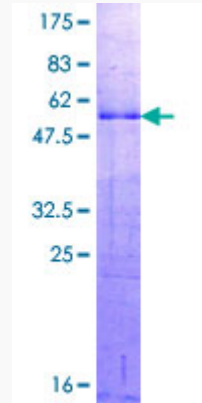
Gene Name	DLX1 distal-less homeobox 1 [Homo sapiens]
Official Symbol	DLX1
Synonyms	DLX1; distal-less homeobox 1; Distal-Less Homeobox 1; Distal-Less Homeo Box 1; homeobox protein DLX-1; distal-less homeo box 1
Gene ID	1745
mRNA Refseq	NM_001038493
Protein Refseq	NP_001033582
MIM	600029
UniProt ID	P56177

 Tel: 1-631-559-9269 1-516-512-3133

 Email: info@creative-biomart.com  Fax: 1-631-938-8127

 45-1 Ramsey Road, Shirley, NY 11967, USA

**Quality Control
Testing**



12.5% SDS-PAGE Stained with Coomassie Blue.

 Tel: 1-631-559-9269 1-516-512-3133

 Email: info@creative-biomart.com  Fax: 1-631-938-8127

 45-1 Ramsey Road, Shirley, NY 11967, USA