

Recombinant Human DMAP1 Protein, GST-tagged

Cat. No. DMAP1-2699H Lot. No. (See product label)

SPECIFICATION

Product Overview	Human DMAP1 partial ORF (NP_061973, 1 a.a. - 100 a.a.) recombinant protein with GST-tag at N-terminal.
Species	Human
Source	Wheat Germ
Description	This gene encodes a subunit of several, distinct complexes involved in the repression or activation of transcription. The encoded protein can independently repress transcription and is targeted to replication foci throughout S phase by interacting directly with the N-terminus of DNA methyltransferase 1. During late S phase, histone deacetylase 2 is added to this complex, providing a means to deacetylate histones in transcriptionally inactive heterochromatin following replication. The encoded protein is also a component of the nucleosome acetyltransferase of H4 complex and interacts with the transcriptional corepressor tumor susceptibility gene 101 and the pro-apoptotic death-associated protein 6, among others. Alternatively spliced transcript variants encoding the same protein have been described. [provided by RefSeq, Jul 2008]
Molecular Mass	36.74 kDa
AA Sequence	MATGADV RDILELGGPEGDAASGTISKKDIINPDKKSKKSSETLTFKRPEGMHREV YALLYSDKKDAPLLPSDTGQGYRTVKAKLGSKKVRPWKWMPF
Applications	Enzyme-linked Immunoabsorbent Assay

 Tel: 1-631-559-9269 1-516-512-3133

 Email: info@creative-biomart.com  Fax: 1-631-938-8127

 45-1 Ramsey Road, Shirley, NY 11967, USA

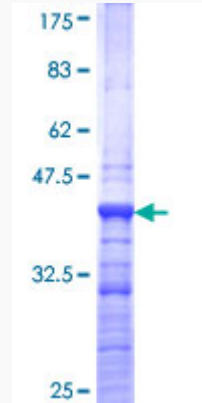
	Western Blot (Recombinant protein) Antibody Production Protein Array
Notes	Best use within three months from the date of receipt of this protein.
Storage	Store at -80 centigrade. Aliquot to avoid repeated freezing and thawing.
Storage Buffer	50 mM Tris-HCl, 10 mM reduced Glutathione, pH=8.0 in the elution buffer.
GENE INFORMATION	
Gene Name	DMAP1 DNA methyltransferase 1 associated protein 1 [Homo sapiens]
Official Symbol	DMAP1
Synonyms	DMAP1; DNA methyltransferase 1 associated protein 1; DNA methyltransferase 1-associated protein 1; DNMAP1; DNMTAP1; EAF2; FLJ11543; KIAA1425; MEAF2; SWC4; DNMT1 associated protein 1; DNMT1-associated protein 1; DKFZp686L09142;
Gene ID	55929
mRNA Refseq	NM_001034024
Protein Refseq	NP_001029196
MIM	605077
UniProt ID	Q9NPF5

 Tel: 1-631-559-9269 1-516-512-3133

 Email: info@creative-biomart.com  Fax: 1-631-938-8127

 45-1 Ramsey Road, Shirley, NY 11967, USA

**Quality Control
Testing**



12.5% SDS-PAGE Stained with Coomassie Blue.

 Tel: 1-631-559-9269 1-516-512-3133

 Email: info@creative-biomart.com  Fax: 1-631-938-8127

 45-1 Ramsey Road, Shirley, NY 11967, USA