

Recombinant Human DMD Protein (Lys3200-Thr3684), N-His tagged

Cat. No. DMD-01H Lot. No. (See product label)

SPECIFICATION

Product Overview

Purified recombinant protein of Human dystrophin (DMD), transcript variant Dp427m, Lys3200-Thr3684, with N-terminal His tag, expressed in E.coli.

Species

Human

Source

E.coli

ProteinLength

Lys3200-Thr3684

Description

This gene spans a genomic range of greater than 2 Mb and encodes a large protein containing an N-terminal actin-binding domain and multiple spectrin repeats. The encoded protein forms a component of the dystrophin-glycoprotein complex (DGC), which bridges the inner cytoskeleton and the extracellular matrix. Deletions, duplications, and point mutations at this gene locus may cause Duchenne muscular dystrophy (DMD), Becker muscular dystrophy (BMD), or cardiomyopathy. Alternative promoter usage and alternative splicing result in numerous distinct transcript variants and protein isoforms for this gene.

Molecular Mass

55.0 kDa

Purity

> 80% as determined by SDS-PAGE and Coomassie blue staining

Notes

For testing in cell culture applications, please filter before use. Note that you may experience some loss of protein during the filtration process.

 Tel: 1-631-559-9269 1-516-512-3133

 Email: info@creative-biomart.com  Fax: 1-631-938-8127

 45-1 Ramsey Road, Shirley, NY 11967, USA

Stability	Stable for 12 months from the date of receipt of the product under proper storage and handling conditions. Avoid repeated freeze-thaw cycles.
Storage	Store at -80 centigrade after receiving vials.
Concentration	>50 µg/mL as determined by microplate BCA method
Storage Buffer	50 mM Tris-HCl, pH 8.0, 8 M urea

GENE INFORMATION

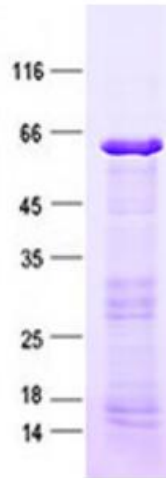
Gene Name	DMD dystrophin [<i>Homo sapiens</i> (human)]
Official Symbol	DMD
Synonyms	DMD; dystrophin; dystrophin (muscular dystrophy, Duchenne and Becker types), includes DXS142, DXS164, DXS206, DXS230, DXS239, DXS268, DXS269, DXS270, DXS272; BMD; DXS142; DXS164; DXS206; DXS230; DXS239; DXS268; DXS269; DXS270; DXS272; muscular dystrophy; Duchenne and Becker types; CMD3B;
Gene ID	1756
mRNA Refseq	NM_004006
Protein Refseq	NP_003997
MIM	300377
UniProt ID	P11532

 Tel: 1-631-559-9269 1-516-512-3133

 Email: info@creative-biomart.com  Fax: 1-631-938-8127

 45-1 Ramsey Road, Shirley, NY 11967, USA

SDS-PAGE



Purified recombinant protein DMD was analyzed by SDS-PAGE gel and Coomossie Blue Staining.

 Tel: 1-631-559-9269 1-516-512-3133

 Email: info@creative-biomart.com  Fax: 1-631-938-8127

 45-1 Ramsey Road, Shirley, NY 11967, USA