

Recombinant Human DMD Protein, GST-tagged

Cat. No. DMD-2704H Lot. No. (See product label)

SPECIFICATION

Product Overview	Human DMD full-length ORF (AAH28720.1, 1 a.a. - 635 a.a.) recombinant protein with GST-tag at N-terminal.
Species	Human
Source	Wheat Germ
ProteinLength	1-635 aa
Description	This gene spans a genomic range of greater than 2 Mb and encodes a large protein containing an N-terminal actin-binding domain and multiple spectrin repeats. The encoded protein forms a component of the dystrophin-glycoprotein complex (DGC), which bridges the inner cytoskeleton and the extracellular matrix. Deletions, duplications, and point mutations at this gene locus may cause Duchenne muscular dystrophy (DMD), Becker muscular dystrophy (BMD), or cardiomyopathy. Alternative promoter usage and alternative splicing result in numerous distinct transcript variants and protein isoforms for this gene. [provided by RefSeq, Dec 2016]
Molecular Mass	95.37 kDa
AA Sequence	MREQLKGHETQTTCWDHPKMTELYQSLADLNNVRFSA YRTAMKLRRLQKALCLDLL SLSAACDALDQHNLKQNDQPM DILQIINCLTTIYDRLEQEHN NLVNVPLCVD MCLN W LLNVYDTGR TGRIRVLSFKTGIISLCKAHLEDKYRYLFKQVASSTGFCDQRRLG LLLH DSIQIPRQLGEVASFGGSNIEPSVRSCFQFANNKPEIEAALFLDWMRLEPQSMVWLP VLHRVAAAETA KHQAKCNICKECPIIGFRYRSLKHFNYDICQSCFFS GRVAKGHKMH

 Tel: 1-631-559-9269 1-516-512-3133

 Email: info@creative-biomart.com  Fax: 1-631-938-8127

 45-1 Ramsey Road, Shirley, NY 11967, USA

YPMVEYCTPTTSGEDVRDFAKVLKNKFRTRKRYFAKHPRMGYLPVQTVLEGDNMET
 PVTLINFWPVDSAPASSPQLSHDDTHSRIEHYASRLAEMENSNGSYLNDISIPNESID
 DEHLLIQHYCQSLNQDSPLSQPRSPAQILISLESEERGERILADLEEEENRNLQAEY
 DRLKQQHEHKGLSPLSPPEMMPTSPQSPRDAELIAEAKLLRQHKGRLEARMQILE
 DHNKQLESQHLRLRQLLEQPQAEAKVNGTTVSSPSTLQRS DSSQPMLLRVVGSQ
 TSDSMGEEDLLSPPQDTSTGLEEVMEQLNNSFPSSRGHNVGSLFHMADDLGRAME
 SLVSVMTDEEGAE

Applications	Enzyme-linked Immunoabsorbent Assay Western Blot (Recombinant protein) Antibody Production Protein Array
Notes	Best use within three months from the date of receipt of this protein.
Storage	Store at -80 centigrade. Aliquot to avoid repeated freezing and thawing.
Storage Buffer	50 mM Tris-HCl, 10 mM reduced Glutathione, pH=8.0 in the elution buffer.

GENE INFORMATION

Gene Name	DMD dystrophin [Homo sapiens]
Official Symbol	DMD
Synonyms	DMD; dystrophin; dystrophin (muscular dystrophy, Duchenne and Becker types), includes DXS142, DXS164, DXS206, DXS230, DXS239, DXS268, DXS269, DXS270, DXS272; BMD; DXS142; DXS164; DXS206; DXS230; DXS239; DXS268; DXS269; DXS270; DXS272; muscular dystrophy; Duchenne and Becker types; CMD3B;
Gene ID	1756

 Tel: 1-631-559-9269 1-516-512-3133

 Email: info@creative-biomart.com  Fax: 1-631-938-8127

 45-1 Ramsey Road, Shirley, NY 11967, USA

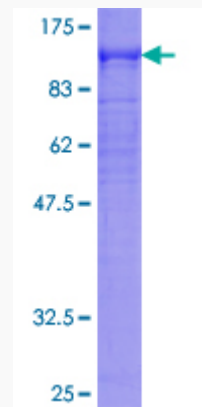
mRNA Refseq [NM_000109](#)

Protein Refseq [NP_000100](#)

MIM [300377](#)

UniProt ID [P11532](#)

**Quality Control
Testing**



12.5% SDS-PAGE Stained with Coomassie Blue.

 Tel: 1-631-559-9269 1-516-512-3133

 Email: info@creative-biomart.com  Fax: 1-631-938-8127

 45-1 Ramsey Road, Shirley, NY 11967, USA