

# Recombinant Human DNAAF1 Protein, Myc/DDK-tagged, C13 and N15-labeled

Cat. No. DNAAF1-855H Lot. No. (See product label)

## SPECIFICATION

### Product Overview

LRRC50 MS Standard C13 and N15-labeled recombinant protein (NP\_848547) with a C-terminal MYC/DDK tag, was expressed in HEK293 cells.

### Species

Human

### Source

HEK293

### Description

The protein encoded by this gene is cilium-specific and is required for the stability of the ciliary architecture. It is involved in the regulation of microtubule-based cilia and actin-based brush border microvilli. Mutations in this gene are associated with primary ciliary dyskinesia-13. Alternative splicing results in multiple transcript variants.

### Molecular Mass

80 kDa

### AA Sequence

MHPEPSEPATGGAAELDCAQEPGVEESAGDHGSAGRGGCKEEINDPKEICVGSSD  
 TSYHSQQKQSGDNGSGGHFAHPREDREDRGRPMTKSSLQKLCKQHKLKLYITPALND  
 TLYLHFKGFDRIVENLEEYTGRLRCLWLQSNGIQKIENLEAQTELRCLFLQMNLRLKIENL  
 EPLQKLDALNLSNYYIKTIENLSCLPVLNLTQMAHNHLETVEDIQHLQECLRLCVDLDS  
 HNKLSDP EILSILEMPDLRVLNLGMNPVIRQIPNYRRTVTVRLKHLTYLDDRPVFPK  
 DRACAEAWARGGYAAEKEERQQWESRERKKITDSIEALAMIKQRAEERKRQRESQ  
 ERGEMTSSDDGENVPASAEGKEEPPGDRETRQKMELVKESFEAKDELCPERPSG  
 EEPVVEAKREDGGPEPEGLPAETLLLSSPVEVKGEDGDGEPEGLPAEAPPPPPP  
 VEVKGEDGDQEPEGLPAETLLLSPVVKVKGEDGDREPEGLPAEAPPPLPLGAAR

Tel: 1-631-559-9269 1-516-512-3133

Email: [info@creative-biomart.com](mailto:info@creative-biomart.com) Fax: 1-631-938-8127

45-1 Ramsey Road, Shirley, NY 11967, USA

EEPTPQAVATEGVFVTELDGTRTEDLETIRLETKETCCIDDLPDLEDDDETGKSLEDQ  
 NMCFPKIEVISSLSDDSDPELDYTSPLVLENLPTDTLSNIFAVSKDTSKAARVPFTDIF  
 KKEAKRDSEIRKQDTKSPRPLIQELSDDEDPSGQPLMPPTCQRDAAPLTSTGDRDSD  
 FLAASSPVPTESAATPPETCVGVAQPSQALPTWDLTAFPAPKASTRTRPLEQKLISE  
 EDLAANDILDYKDDDDKV

**Purity** > 80% as determined by SDS-PAGE and Coomassie blue staining

**Stability** Stable for 3 months from receipt of products under proper storage and handling conditions.

**Storage** Store at -80 centigrade. Avoid repeated freeze-thaw cycles.

**Concentration** 50 µg/mL as determined by BCA

**Storage Buffer** 100 mM glycine, 25 mM Tris-HCl, pH 7.3.

## GENE INFORMATION

**Gene Name** [DNAAF1 dynein axonemal assembly factor 1 \[ Homo sapiens \(human\) \]](#)

**Official Symbol** [DNAAF1](#)

**Synonyms** DNAAF1; dynein, axonemal, assembly factor 1; leucine rich repeat containing 50, LRRC50; dynein assembly factor 1, axonemal; CILD13; FLJ25330; ODA7; outer row dynein assembly 7 homolog (Chlamydomonas); leucine rich repeat containing 50; outer row dynein assembly 7 homolog; leucine-rich repeat-containing protein 50; LRRC50; DKFZp434A119;

**Gene ID** [123872](#)

 Tel: 1-631-559-9269 1-516-512-3133

 Email: [info@creative-biomart.com](mailto:info@creative-biomart.com)  Fax: 1-631-938-8127

 45-1 Ramsey Road, Shirley, NY 11967, USA

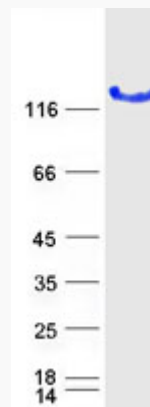
mRNA Refseq [NM\\_178452](#)

Protein Refseq [NP\\_848547](#)

MIM [613190](#)

UniProt ID [Q8NEP3](#)

SDS-PAGE



 Tel: 1-631-559-9269 1-516-512-3133

 Email: [info@creative-biomart.com](mailto:info@creative-biomart.com)  Fax: 1-631-938-8127

 45-1 Ramsey Road, Shirley, NY 11967, USA