

Recombinant Human DNAJB1 Protein(Gly2-Ile340), C-6xHis-tagged

Cat. No. DNAJB1-270H Lot. No. (See product label)

SPECIFICATION

Product Overview	Recombinant Human DNAJB1 Protein(Gly2-Ile340), fused with His tag at the C-terminus, was expressed in E.coli.
Species	Human
Source	E.coli
ProteinLength	Gly2-Ile340
Form	Lyophilized from a 0.2 µm filtered solution of PBS, 1mM EDTA, pH 7.4.
Molecular Mass	38 KDa
Endotoxin	Less than 0.1 ng/g (1 EU/g) as determined by LAL test.
Purity	Greater than 95% as determined by reducing SDS-PAGE.
Storage	Lyophilized protein should be stored at ≤ -20°C, stable for one year after receipt. Reconstituted protein solution can be stored at 2-8°C for 2-7 days. Aliquots of reconstituted samples are stable at ≤ -20°C for 3 months.
Reconstitution	Always centrifuge tubes before opening. Do not mix by vortex or pipetting. It is not recommended to reconstitute to a concentration less than 100µg/ml. Dissolve the lyophilized protein in distilled water.

 Tel: 1-631-559-9269 1-516-512-3133

 Email: info@creative-biomart.com  Fax: 1-631-938-8127

 45-1 Ramsey Road, Shirley, NY 11967, USA

Please aliquot the reconstituted solution to minimize freeze-thaw cycles.

GENE INFORMATION

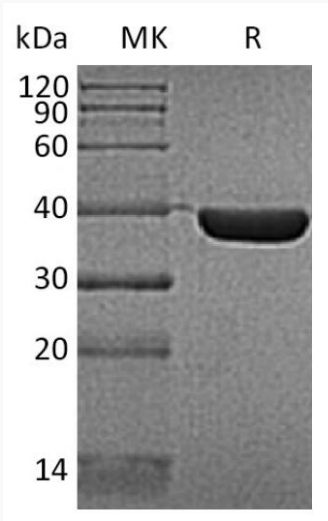
Gene Name	DNAJB1 DnaJ (Hsp40) homolog, subfamily B, member 1 [Homo sapiens]
Official Symbol	DNAJB1
Synonyms	DNAJB1; DnaJ (Hsp40) homolog, subfamily B, member 1; HSPF1; dnaJ homolog subfamily B member 1; Hsp40; radial spoke 16 homolog B (Chlamydomonas); RSPH16B; Sis1; hDj-1; human DnaJ protein 1; heat shock protein 40; dnaJ protein homolog 1; heat shock 40kD protein 1; radial spoke 16 homolog B; heat shock 40 kDa protein 1; DnaJ (Hsp40) homolog, subfamily B, member 1; Hdj1
Gene ID	3337
mRNA Refseq	NM_006145
Protein Refseq	NP_006136
MIM	604572
UniProt ID	P25685

 Tel: 1-631-559-9269 1-516-512-3133

 Email: info@creative-biomart.com  Fax: 1-631-938-8127

 45-1 Ramsey Road, Shirley, NY 11967, USA

SDS-PAGE



 Tel: 1-631-559-9269 1-516-512-3133

 Email: info@creative-biomart.com  Fax: 1-631-938-8127

 45-1 Ramsey Road, Shirley, NY 11967, USA