

## Recombinant Human DNALI1 Protein, GST-tagged

Cat. No. DNALI1-2773H Lot. No. (See product label)

### SPECIFICATION

|                         |  |
|-------------------------|--|
| <b>Product Overview</b> | Human DNALI1 full-length ORF ( AAH46117, 1 a.a. - 258 a.a.) recombinant protein with GST-tag at N-terminal.  |
| <b>Species</b>          | Human  |
| <b>Source</b>           | Wheat Germ   |
| <b>Description</b>      | This gene is the human homolog of the Chlamydomonas inner dynein arm gene, p28. The precise function of this gene is not known, however, it is a potential candidate for immotile cilia syndrome (ICS). Ultrastructural defects of the inner dynein arms are seen in patients with ICS. Immotile mutant strains of Chlamydomonas, a biflagellated algae, exhibit similar defects. [provided by RefSeq, Jul 2008] |
| <b>Molecular Mass</b>   | 54.12 kDa  |
| <b>AA Sequence</b>      | MIPPADSLKDYDTPVLVSRNTEKRSPKARLLKVSPQQPGPSGSAPQPPKTKLPSTPC<br>VPDPTKQAEIILNAILPPREWVEDTQLWIQQVSSTPSTRMDVVHLQEQLDLKLQQR<br>QARETGICPVRRELYSQCFDELIREVTINCAERGLLLLRVRDEIRMTIAAYQTLYESSV<br>AFGMRKALQAEQGKSDMERKIAELETEKRDRLERQVNEQKAKCEATEKRESERRQV<br>EEKKHNEEIQLKRTNQQQLKAQLEGIIAPKK  |
| <b>Applications</b>     | Enzyme-linked Immunoabsorbent Assay<br>Western Blot (Recombinant protein)<br>Antibody Production<br>Protein Array  |

 Tel: 1-631-559-9269 1-516-512-3133

 Email: [info@creative-biomart.com](mailto:info@creative-biomart.com)  Fax: 1-631-938-8127

 45-1 Ramsey Road, Shirley, NY 11967, USA

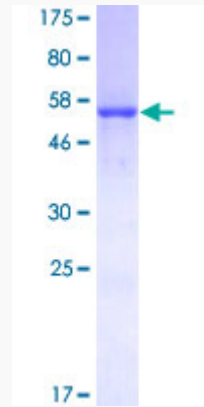
|                         |   |
|-------------------------|---|
| <b>Notes</b>            | Best use within three months from the date of receipt of this protein.  |
| <b>Storage</b>          | Store at -80 centigrade. Aliquot to avoid repeated freezing and thawing.  |
| <b>Storage Buffer</b>   | 50 mM Tris-HCl, 10 mM reduced Glutathione, pH=8.0 in the elution buffer.  |
| <b>GENE INFORMATION</b> |   |
| <b>Gene Name</b>        | DNALI1 dynein, axonemal, light intermediate chain 1 [ Homo sapiens ]  |
| <b>Official Symbol</b>  | DNALI1  |
| <b>Synonyms</b>         | DNALI1; dynein, axonemal, light intermediate chain 1; dynein, axonemal, light intermediate polypeptide 1; axonemal dynein light intermediate polypeptide 1; dJ423B22.5; dJ423B22.5 (axonemal dynein light chain (hp28)); hp28; inner dynein arm; homolog of clamydomonas; P28; inner dynein arm light chain, axonemal; inner dynein arm, homolog of clamydomonas; |
| <b>Gene ID</b>          | 7802  |
| <b>mRNA Refseq</b>      | NM_003462   |
| <b>Protein Refseq</b>   | NP_003453   |
| <b>MIM</b>              | 602135  |
| <b>UniProt ID</b>       | O14645  |

 Tel: 1-631-559-9269 1-516-512-3133

 Email: [info@creative-biomart.com](mailto:info@creative-biomart.com)  Fax: 1-631-938-8127

 45-1 Ramsey Road, Shirley, NY 11967, USA

**Quality Control  
Testing**



12.5% SDS-PAGE Stained with Coomassie Blue.

 Tel: 1-631-559-9269 1-516-512-3133

 Email: [info@creative-biomart.com](mailto:info@creative-biomart.com)  Fax: 1-631-938-8127

 45-1 Ramsey Road, Shirley, NY 11967, USA