

Recombinant Human DNASE1L3 protein, GST-tagged

Cat. No. DNASE1L3-12097H Lot. No. (See product label)

SPECIFICATION

Product Overview	Recombinant Human DNASE1L3 protein(NP_001243489.1)(21-305aa), fused to GST-tag, was expressed in E. coli.
Species	Human
Source	E.coli
ProteinLength	21-305aa
Description	<p>The cDNA fragment encoding 21-305aa of Human Deoxyribonuclease gamma (DNASE1L3) was fused with an N-terminal GST-tag and then expressed in E.coli. The product obtained is the recombinant full-length of mature human DNASE1L3 protein. Its purity was determined by using SDS-PAGE and reached up to 90%. Under the reducing conditions, the gel presented a molecular mass band of about 62 kDa. The slightly higher result was attributed to glycosylation. It was also validated by the LC-MS/MS analysis. In-stock DNASE1L3 proteins are offered now. This recombinant DNASE1L3 protein may find uses in the specific antibody generation or the studies of cell biology.</p> <p>DNASE1L3 is a secreted DNASE1-like nuclease, which can digest DNA in chromatin. The deletion of DNASE1L3 can cause anti-DNA responses and autoimmunity in humans and mice. Lee Serpas et al. proved that DNASE1L3 plays a role in circulating plasma DNA homeostasis by enhancing fragmentation and affecting terminal motif frequencies. These results support the unique role of DNASE1L3 as a regulator of physical form and cell-free DNA availability, which may be significant for the</p>

 Tel: 1-631-559-9269 1-516-512-3133

 Email: info@creative-biomart.com  Fax: 1-631-938-8127

 45-1 Ramsey Road, Shirley, NY 11967, USA

	DNASE1L3's mechanism of preventing autoimmunity.
Form	Tris-based buffer,50% glycerol
Molecular Mass	60.4kDa
AA Sequence	MRICSFNVRSEFGESKQEDKNAMDVIVKVIKRCDIILVMEIKDSNNRICPILMEKLNRRNS RRGITYNYVISSRLGRNTYKEQYAFLYKEKLVSVKRSYHYHDYQDGDADVFSREPFV VWFQSPHTAVKDFVIIPLHTTPETSVKEIDELVEVYTDVKHRWKAENFIFMGDFNAGC SYVPPKAWKNIRLRTDPRFVWLIGDQEDTTVKKSTNCAYDRIVLRGQEIVSSVVPKS NSVDFDQKAYKLTEEEALDVSDHFPVEFKLQSSRAFTNSKKSVTLRKKTKSKRS
Purity	Greater than 90% as determined by SDS-PAGE.
Notes	Repeated freezing and thawing is not recommended. Store working aliquots at 4°C for up to one week.
Storage	Store at -20°C upon receipt, aliquoting is necessary for mutiple use. Avoid repeated freeze-thaw cycles.
Reconstitution	We recommend that this vial be briefly centrifuged prior to opening to bring the contents to the bottom. Please reconstitute protein in deionized sterile water to a concentration of 0.1-1.0 mg/mL.We recommend to add 5-50% of glycerol (final concentration) and aliquot for long-term storage at -20°C/-80°C. Our default final concentration of glycerol is 50%. Customers could use it as reference.
GENE INFORMATION	
Gene Name	DNASE1L3 deoxyribonuclease 1 like 3 [Homo sapiens (human)]
Official Symbol	DNASE1L3

 Tel: 1-631-559-9269 1-516-512-3133

 Email: info@creative-biomart.com  Fax: 1-631-938-8127

 45-1 Ramsey Road, Shirley, NY 11967, USA

Synonyms Deoxyribonuclease gamma; Deoxyribonuclease I like 3; Deoxyribonuclease I like III; Deoxyribonuclease I-like 3; DHP 2; DHP2; DNASE1L3; DNase gamma; DNase I homolog protein 2; DNase I homolog protein DHP2; DNase I like 3; DNase I-like 3; DNASE1L3; DNSL3_HUMAN; Liver and spleen DNase; LS DNase; LS-DNase; LSD; SLEB 16; SLEB16

Gene ID 1776

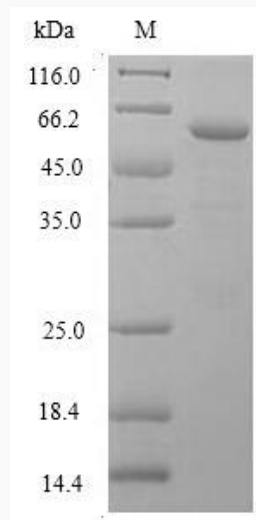
mRNA Refseq NM_001256560.2

Protein Refseq NP_001243489.1

MIM 602244

UniProt ID Q13609

**SDS-PAGE of
DNASE1L3-12097H**



 Tel: 1-631-559-9269 1-516-512-3133

 Email: info@creative-biomart.com  Fax: 1-631-938-8127

 45-1 Ramsey Road, Shirley, NY 11967, USA