

Recombinant Human DNASE1L3 Protein, Full Length, N-GST and C-His tagged

Cat. No. DNASE1L3-13HFL Lot. No. (See product label)

SPECIFICATION

Product Overview	Purified recombinant protein of Human deoxyribonuclease I-like 3 (DNASE1L3), full length, with N-terminal GST and C-terminal His tag, expressed in E. coli.
Species	Human
Source	E.coli
ProteinLength	Full Length
Description	This gene encodes a member of the deoxyribonuclease I family. The encoded protein hydrolyzes DNA, is not inhibited by actin, and mediates the breakdown of DNA during apoptosis. Mutations in this gene are a cause of systemic lupus erythematosus-16. Alternatively spliced transcript variants encoding multiple isoforms have been observed for this gene.
Molecular Mass	35.5 kDa
Purity	> 80% as determined by SDS-PAGE and Coomassie blue staining
Notes	For testing in cell culture applications, please filter before use. Note that you may experience some loss of protein during the filtration process.
Stability	Stable for 12 months from the date of receipt of the product under proper storage and handling conditions. Avoid repeated freeze-thaw cycles.

 Tel: 1-631-559-9269 1-516-512-3133

 Email: info@creative-biomart.com  Fax: 1-631-938-8127

 45-1 Ramsey Road, Shirley, NY 11967, USA

Storage	Store at -80 centigrade after receiving vials.
Concentration	> 0.05 µg/µL as determined by microplate BCA method
Storage Buffer	50 mM Tris-HCl, pH 8.0, 8 M urea

GENE INFORMATION

Gene Name	DNASE1L3 deoxyribonuclease I-like 3 [Homo sapiens (human)]
Official Symbol	DNASE1L3
Synonyms	DNASE1L3; deoxyribonuclease I-like 3; deoxyribonuclease gamma; DNASE1L3; DNase gamma; LSD; LS-DNase; DNase I-like 3; Liver and spleen DNase; DNase I homolog protein 2; DNase I homolog protein DHP2; deoxyribonuclease I-like III; DHP2; SLEB16;
Gene ID	1776
mRNA Refseq	NM_001256560
Protein Refseq	NP_001243489
MIM	602244
UniProt ID	Q13609

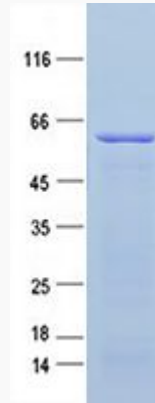
 Tel: 1-631-559-9269 1-516-512-3133

 Email: info@creative-biomart.com  Fax: 1-631-938-8127

 45-1 Ramsey Road, Shirley, NY 11967, USA



SDS-PAGE



Tel: 1-631-559-9269 1-516-512-3133

Email: info@creative-biomart.com Fax: 1-631-938-8127

45-1 Ramsey Road, Shirley, NY 11967, USA