

Recombinant Human DNASE1L3 Protein, GST-tagged

Cat. No. DNASE1L3-1535H Lot. No. (See product label)

SPECIFICATION

Product Overview	Recombinant human full-length DNASE1L3 (NP_004935.1, 1 a.a. - 305 a.a.) was expressed in wheat germ with GST-tag at N-terminal.
Species	Human
Source	Wheat Germ
ProteinLength	1-305 aa
Description	This gene encodes a member of the DNase family. The protein hydrolyzes DNA, is not inhibited by actin, and mediates the breakdown of DNA during apoptosis. Alternate transcriptional splice variants of this gene have been observed but have not been thoroughly characterized.
Form	50 mM Tris-HCl, 10 mM reduced Glutathione, pH 8.0.
Molecular Mass	61.9 kDa
AA Sequence	MSRELAPLLLLLSIHSALAMRICSFNVRSEKQEDKNAMDVIVKVIKRCDIILVMEI KDSNNRICPILMEKLNRRNSRRGITYNYVISSRLGRNTYKEQYAFLYKEKLVSVKRSYH YHDYQDGDADVFSREPFVWFQSPHTAVKDFVIIPLHTTPETSVKEIDELVEVYTDVK HRWKAENFIFMGDFNAGCSYVPPKAWKNIRLRTDPRFVWLIGDQEDTTVKKSTNCA YDRIVLRGQEIVSSVVPKSNVDFDFQKAYKLTEEEALDVSDHFPVEFKLQSSRAFTN SKKSVTLRKKTKSKRS

 Tel: 1-631-559-9269 1-516-512-3133

 Email: info@creative-biomart.com  Fax: 1-631-938-8127

 45-1 Ramsey Road, Shirley, NY 11967, USA

Storage Store at -80 centigrade.

GENE INFORMATION

Gene Name DNASE1L3 deoxyribonuclease 1 like 3 [Homo sapiens (human)]

Official Symbol DNASE1L3

Synonyms DHP2; DNASE1L3; LSD

Gene ID 1776

mRNA Refseq NM_004944.2

Protein Refseq NP_004935.1

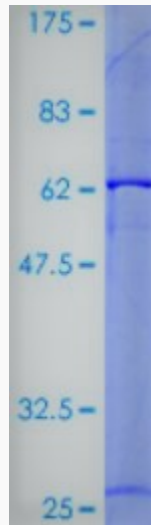
MIM 602244

UniProt ID Q13609

 Tel: 1-631-559-9269 1-516-512-3133

 Email: info@creative-biomart.com  Fax: 1-631-938-8127

 45-1 Ramsey Road, Shirley, NY 11967, USA



Tel: 1-631-559-9269 1-516-512-3133

Email: info@creative-biomart.com Fax: 1-631-938-8127

45-1 Ramsey Road, Shirley, NY 11967, USA