

Recombinant Mouse DNASE1L3 protein, His-tagged

Cat. No. DNASE1L3-2268M Lot. No. (See product label)

SPECIFICATION

Product Overview	Recombinant Mouse DNASE1L3 protein(26-310aa), fused with C-terminal His tag, was wxpressed in E. coli.
Species	Mouse
Source	E.coli
ProteinLength	26-310aa
Form	If the delivery form is liquid, the default storage buffer is Tris/PBS-based buffer, 5%-50% glycerol. If the delivery form is lyophilized powder, the buffer before lyophilization is Tris/PBS-based buffer, 6% Trehalose, pH 8.0.
Molecular Mass	40.1kDa
Purity	Greater than 95% as determined by SDS-PAGE.
Storage	Store at -20°C/-80°C upon receipt, aliquoting is necessary for mutiple use. Avoid repeated freeze-thaw cycles.
Reconstitution	We recommend that this vial be briefly centrifuged prior to opening to bring the contents to the bottom. Please reconstitute protein in deionized sterile water to a concentration of 0.1-1.0 mg/mL. We recommend to add 5-50% of glycerol (final concentration) and aliquot for long-term storage at -20°C/-80°C. Our default final concentration of glycerol is 50%.

 Tel: 1-631-559-9269 1-516-512-3133

 Email: info@creative-biomart.com  Fax: 1-631-938-8127

 45-1 Ramsey Road, Shirley, NY 11967, USA

GENE INFORMATION

Gene Name Dnase1l3 deoxyribonuclease 1-like 3 [Mus musculus]

Official Symbol Dnase1l3

Synonyms (DNase gamma)(DNase I homolog protein DHP2)(Deoxyribonuclease I-like 3)(DNase I-like 3)(Liver and spleen DNase)(LS-DNase)(LSD)

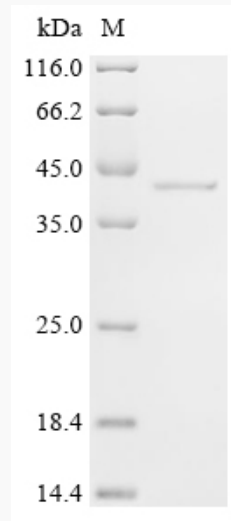
Gene ID 13421

mRNA Refseq NM_007870

Protein Refseq NP_031896

UniProt ID O55070

SDS-PAGE



 Tel: 1-631-559-9269 1-516-512-3133

 Email: info@creative-biomart.com  Fax: 1-631-938-8127

 45-1 Ramsey Road, Shirley, NY 11967, USA