

## Recombinant Mouse DNASE1L3 protein, His-tagged

Cat. No. DNASE1L3-2269M Lot. No. (See product label)

### SPECIFICATION

<b>Product Overview</b>	Recombinant Mouse DNASE1L3 protein(26-310aa), fused with N-terminal His tag, was wxpressed in E. coli.
<b>Species</b>	Mouse
<b>Source</b>	E.coli
<b>ProteinLength</b>	26-310aa
<b>Form</b>	If the delivery form is liquid, the default storage buffer is Tris/PBS-based buffer, 5%-50% glycerol. If the delivery form is lyophilized powder, the buffer before lyophilization is Tris/PBS-based buffer, 6% Trehalose, pH 8.0.
<b>Molecular Mass</b>	39.1kDa
<b>Purity</b>	Greater than 95% as determined by SDS-PAGE.
<b>Storage</b>	Store at -20°C/-80°C upon receipt, aliquoting is necessary for mutiple use. Avoid repeated freeze-thaw cycles.
<b>Reconstitution</b>	We recommend that this vial be briefly centrifuged prior to opening to bring the contents to the bottom. Please reconstitute protein in deionized sterile water to a concentration of 0.1-1.0 mg/mL. We recommend to add 5-50% of glycerol (final concentration) and aliquot for long-term storage at -20°C/-80°C. Our default final concentration of glycerol is 50%.

 Tel: 1-631-559-9269 1-516-512-3133

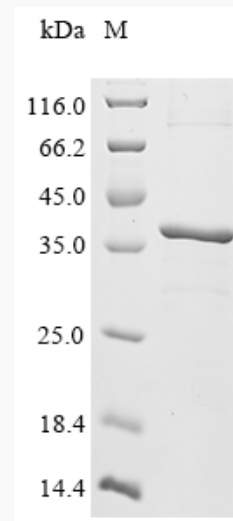
 Email: [info@creative-biomart.com](mailto:info@creative-biomart.com)  Fax: 1-631-938-8127

 45-1 Ramsey Road, Shirley, NY 11967, USA

## GENE INFORMATION

<b>Gene Name</b>	Dnase1l3 deoxyribonuclease 1-like 3 [ <i>Mus musculus</i> ]
<b>Official Symbol</b>	Dnase1l3
<b>Synonyms</b>	(DNase gamma)(DNase I homolog protein DHP2)(Deoxyribonuclease I-like 3)(DNase I-like 3)(Liver and spleen DNase)(LS-DNase)(LSD)
<b>Gene ID</b>	13421
<b>mRNA Refseq</b>	NM_007870
<b>Protein Refseq</b>	NP_031896
<b>UniProt ID</b>	O55070

### SDS-PAGE



Tel: 1-631-559-9269 1-516-512-3133

Email: [info@creative-biomart.com](mailto:info@creative-biomart.com) Fax: 1-631-938-8127

45-1 Ramsey Road, Shirley, NY 11967, USA