

Recombinant Human DNER Protein, GST-tagged

Cat. No. DNER-2784H Lot. No. (See product label)

SPECIFICATION

Product Overview	Human DNER partial ORF (NP_620711, 368 a.a. - 476 a.a.) recombinant protein with GST-tag at N-terminal.
Species	Human
Source	Wheat Germ
Description	DNER (Delta/Notch Like EGF Repeat Containing) is a Protein Coding gene. Among its related pathways are Notch signaling pathway (KEGG) and Canonical and Non-canonical Notch signaling. GO annotations related to this gene include calcium ion binding and clathrin binding. An important paralog of this gene is SLIT1.
Molecular Mass	37.73 kDa
AA Sequence	NEKQDGSNFTCVCLPGYTGELCQSKIDYICILDPCRNGATCISSLSGFTQCQPEGYFG SACEEKVDLCASSPCQNNGTCYVDGVHFTCNCSGFTGPTCAQLIDFCALSP
Applications	Enzyme-linked Immunoabsorbent Assay Western Blot (Recombinant protein) Antibody Production Protein Array
Notes	Best use within three months from the date of receipt of this protein.
Storage	Store at -80 centigrade. Aliquot to avoid repeated freezing and thawing.

 Tel: 1-631-559-9269 1-516-512-3133

 Email: info@creative-biomart.com  Fax: 1-631-938-8127

 45-1 Ramsey Road, Shirley, NY 11967, USA

Storage Buffer 50 mM Tris-HCl, 10 mM reduced Glutathione, pH=8.0 in the elution buffer.

GENE INFORMATION

Gene Name [DNER delta/notch-like EGF repeat containing \[Homo sapiens \]](#)

Official Symbol [DNER](#)

Synonyms DNER; delta/notch-like EGF repeat containing; delta and Notch-like epidermal growth factor-related receptor; bet; UNQ26; H_NH0150O02.1; WUGSC:H_NH0150O02.1; delta-notch-like EGF repeat-containing transmembrane;

Gene ID [92737](#)

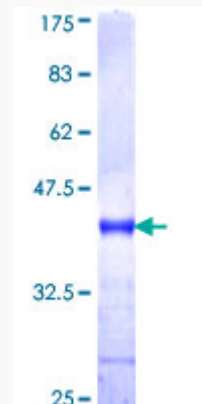
mRNA Refseq [NM_139072](#)

Protein Refseq [NP_620711](#)

MIM [607299](#)

UniProt ID [Q8NFT8](#)

Quality Control Testing



 Tel: 1-631-559-9269 1-516-512-3133

 Email: info@creative-biomart.com  Fax: 1-631-938-8127

 45-1 Ramsey Road, Shirley, NY 11967, USA



12.5% SDS-PAGE Stained with Coomassie Blue.

 Tel: 1-631-559-9269 1-516-512-3133

 Email: info@creative-biomart.com  Fax: 1-631-938-8127

 45-1 Ramsey Road, Shirley, NY 11967, USA