

# Recombinant Human DNM1L Protein, Myc/DDK-tagged, C13 and N15-labeled

Cat. No. DNM1L-2471H Lot. No. (See product label)

## SPECIFICATION

### Product Overview

DNM1L MS Standard C13 and N15-labeled recombinant protein (NP\_036193) with a C-terminal MYC/DDK tag, was expressed in HEK293 cells.

### Species

Human

### Source

HEK293

### Description

This gene encodes a member of the dynamin superfamily of GTPases. The encoded protein mediates mitochondrial and peroxisomal division, and is involved in developmentally regulated apoptosis and programmed necrosis. Dysfunction of this gene is implicated in several neurological disorders, including Alzheimer's disease. Mutations in this gene are associated with the autosomal dominant disorder, encephalopathy, lethal, due to defective mitochondrial and peroxisomal fission (EMPF). Alternative splicing results in multiple transcript variants encoding different isoforms.

### Molecular Mass

79.4 kDa

### AA Sequence

MEALIPVINKLQDVFNVTGADIIQLPQIVVVGTSQSSGKSSVLESVGRDLLPRGTGIVT  
RRPLILQLVHVSQEDKRKTTGEENGVEAEWVGKFLHTKNKLYTDFDEIRQEIENETE  
RISGNNKGVSPAPIHLKIFSPNVVNLTLVDLPGMTKVPVGDQPKDIELQIRELILRFISN  
PNSIILAVTAANTDMATSEALKISREVDPDGRRTLAVITKLDLMDAGTDAMDVLMGRV  
IPVKLGIIGVVNRSQLDINNKKSVTDSIRDEYAFLLQKKYPSLANRNGTKYLARTLNRL

 Tel: 1-631-559-9269 1-516-512-3133

 Email: [info@creative-biomart.com](mailto:info@creative-biomart.com)  Fax: 1-631-938-8127

 45-1 Ramsey Road, Shirley, NY 11967, USA

MHHIRDCLPELKTRINVLAAQYQSLNLSYGEPVDDKSATLLQLITKFATEYCNITIEGTA  
 KYIETSELGGARICYIFHETFGRTLLESVDPLGGLNTIDILTAIRNATGPRPALFVPEVS  
 FELLVQRQIKRLEEPSLRCVELVHEEMQRRIQHCSNYSTQELLRFPKLHDAIVEVVTCL  
 LRKRLPVTNEMVHNLVAIELAYINTKHPDFADACGLMNNNIEEQRRLARELPSAV  
 SRDKLIQDSRRETKNVASGGGGVGDGVQEPTTGNWRGMLKTSKAEELLAEEKSKPI  
 PIMPASPQKGHAVNLLDVPVPVARKLSAREQRDCEVIERLIKSYFLIVRKNIQDSVPK  
 AVMHFLVNHVKDTLQSELVGQLYKSSLLDDLLTESEDMAQRRKEAADMLKALQGAS  
 QIIAIRETHLWTRTRPLEQKLISEEDLAANDILDYKDDDDKV

**Purity** > 80% as determined by SDS-PAGE and Coomassie blue staining

**Stability** Stable for 3 months from receipt of products under proper storage and handling conditions.

**Storage** Store at -80 centigrade. Avoid repeated freeze-thaw cycles.

**Concentration** 50 µg/mL as determined by BCA

**Storage Buffer** 100 mM glycine, 25 mM Tris-HCl, pH 7.3.

## GENE INFORMATION

**Gene Name** [DNM1L dynamin 1-like \[ Homo sapiens \(human\) \]](#)

**Official Symbol** [DNM1L](#)

**Synonyms** DNM1L; dynamin 1-like; dynamin-1-like protein; DRP1; DVLP; DYMPLE; HDYNIV; VPS1; dynamin-like protein 4; dynamin-like protein IV; Dnm1p/Vps1p-like protein; dynamin-related protein 1; dynamin family member proline-rich carboxyl-terminal domain less; DLP1; EMPF; DYNIV-11; FLJ41912;

 Tel: 1-631-559-9269 1-516-512-3133

 Email: [info@creative-biomart.com](mailto:info@creative-biomart.com)  Fax: 1-631-938-8127

 45-1 Ramsey Road, Shirley, NY 11967, USA

**Gene ID** 10059

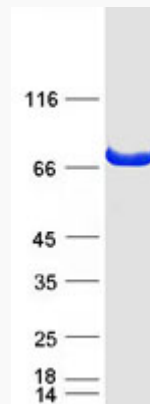
**mRNA Refseq** NM\_012063

**Protein Refseq** NP\_036193

**MIM** 603850

**UniProt ID** O00429

**SDS-PAGE**



 Tel: 1-631-559-9269 1-516-512-3133

 Email: [info@creative-biomart.com](mailto:info@creative-biomart.com)  Fax: 1-631-938-8127

 45-1 Ramsey Road, Shirley, NY 11967, USA