

# Active Recombinant Human DNMT3A Protein, N-6xHis-FLAG-tagged

Cat. No. DNMT3A-391H Lot. No. (See product label)

## SPECIFICATION

<b>Product Overview</b>	Active Recombinant Human DNMT3A Protein (NP_783328.1)(214-912 aa) was expressed in Sf9 cells and contains an N-terminal 6xHis Tag and FLAG-Tag.
<b>Species</b>	Human
<b>Source</b>	Insect Cells
<b>ProteinLength</b>	214-912 aa
<b>Form</b>	Supplied in 25 mM Tris pH 8.0, 500 mM NaCl, 5% Glycerol, 0.04% Triton X-100, 1mM DTT and 0.2 mg/ml 3x Flag peptide.
<b>Bio-activity</b>	Recombinant DNMT3A protein activity assay Recombinant DNMT3A protein activity was measured using DNMT Activity / Inhibition Assay, Active Motif, for 1 hour at 37°C.
<b>Molecular Mass</b>	83.8 kDa
<b>Purity</b>	>95% pure by SDS-PAGE.
<b>Storage</b>	Recombinant proteins in solution are temperature sensitive and must be stored at -80°C to prevent degradation. Avoid repeated freeze/thaw cycles and keep on ice when not in storage.

 Tel: 1-631-559-9269 1-516-512-3133

 Email: [info@creative-biomart.com](mailto:info@creative-biomart.com)  Fax: 1-631-938-8127

 45-1 Ramsey Road, Shirley, NY 11967, USA

**Reconstitution** It is recommended that sterile water be added to the vial to prepare a stock solution of 0.2 ug/ul. Centrifuge the vial at 4°C before opening to recover the entire contents.

## GENE INFORMATION

**Gene Name** DNMT3A DNA (cytosine-5-)-methyltransferase 3 alpha [ Homo sapiens ]

**Official Symbol** DNMT3A

**Synonyms** DNMT3A; DNA (cytosine-5-)-methyltransferase 3 alpha; DNA (cytosine-5)-methyltransferase 3A; DNA MTase HsaIIIA; DNA cytosine methyltransferase 3A2; DNMT3A2; M.HsaIIIA;

**Gene ID** 1788

**mRNA Refseq** NM\_022552

**Protein Refseq** NP\_072046

**MIM** 602769

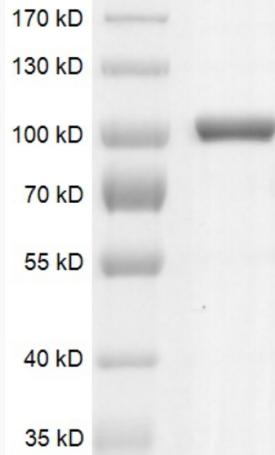
**UniProt ID** Q9Y6K1

 Tel: 1-631-559-9269 1-516-512-3133

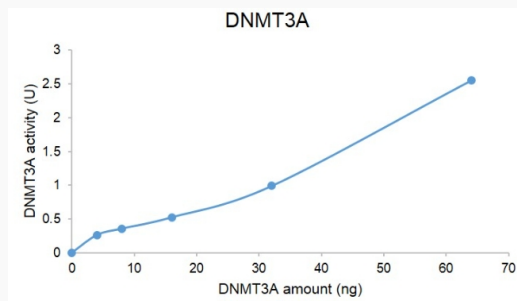
 Email: [info@creative-biomart.com](mailto:info@creative-biomart.com)  Fax: 1-631-938-8127

 45-1 Ramsey Road, Shirley, NY 11967, USA

**SDS-PAGE**



**Activity**



 Tel: 1-631-559-9269 1-516-512-3133

 Email: [info@creative-biomart.com](mailto:info@creative-biomart.com)  Fax: 1-631-938-8127

 45-1 Ramsey Road, Shirley, NY 11967, USA