

Recombinant Human DOC2A Protein, GST-tagged

Cat. No. DOC2A-2800H Lot. No. (See product label)

SPECIFICATION

Product Overview Human DOC2A full-length ORF (AAH63436, 1 a.a. - 400 a.a.) recombinant protein with GST-tag at N-terminal.

Species Human

Source Wheat Germ

Description There are at least two protein isoforms of the Double C2 protein, namely alpha (DOC2A) and beta (DOC2B), which contain two C2-like domains. DOC2A and DOC2B are encoded by different genes; these genes are at times confused with the unrelated DAB2 gene which was initially named DOC-2. DOC2A is mainly expressed in brain and is suggested to be involved in Ca(2+)-dependent neurotransmitter release. Alternative splicing results in multiple transcript variants. [provided by RefSeq, Aug 2013]

Molecular Mass 69.74 kDa

AA Sequence

```
MRGRRGDRMTINIQEHMAINVCPGPIRPIRQISDYFPRGPGPEGGGGSGGEAPAH
L
VPLALAPPAALLGATTPEDGAEVDSYDSDDATALGTLFDLLYDRASCTLHCSILRAK
GLKPMDFENGLADPYVKLHLLPGACKANKLKTQQRNTLNPVWNEDLTYSGITDDDDIT
HKVLRIVCDEDKLSHNEFIGEIRVPLRRLKPSQKKHFNICLERQVPLASPSSMSAAL
RGISCYLKELEQAEQGGQGLLEERGRILLSLSYSSRRRGLLVGILRCAHLAAMDVNGY
SDPYVKTYLRPDVDKKSCHKTCVKKKTLNPEFNEEFFYEIELSTLATKTLVTVWDYD
IGKSNDFIGGVSLGPGARGEARKHWSCLQQPDAALERWHTLTSELPPAAGALSSA
```

 Tel: 1-631-559-9269 1-516-512-3133

 Email: info@creative-biomart.com  Fax: 1-631-938-8127

 45-1 Ramsey Road, Shirley, NY 11967, USA



Applications	Enzyme-linked Immunoabsorbent Assay Western Blot (Recombinant protein) Antibody Production Protein Array
Notes	Best use within three months from the date of receipt of this protein.
Storage	Store at -80 centigrade. Aliquot to avoid repeated freezing and thawing.
Storage Buffer	50 mM Tris-HCl, 10 mM reduced Glutathione, pH=8.0 in the elution buffer.

GENE INFORMATION

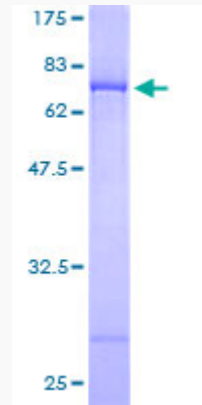
Gene Name	DOC2A double C2-like domains, alpha [Homo sapiens]
Official Symbol	DOC2A
Synonyms	DOC2A; double C2-like domains, alpha; double C2-like domain-containing protein alpha; doc2-alpha; Doc2;
Gene ID	8448
mRNA Refseq	NM_003586
Protein Refseq	NP_003577
MIM	604567
UniProt ID	Q14183

Tel: 1-631-559-9269 1-516-512-3133

Email: info@creative-biomart.com Fax: 1-631-938-8127

45-1 Ramsey Road, Shirley, NY 11967, USA

**Quality Control
Testing**



12.5% SDS-PAGE Stained with Coomassie Blue.

 Tel: 1-631-559-9269 1-516-512-3133

 Email: info@creative-biomart.com  Fax: 1-631-938-8127

 45-1 Ramsey Road, Shirley, NY 11967, USA