

Recombinant Human DOC2B Protein (Gly173-Arg397), N-His tagged

Cat. No. DOC2B-2237H Lot. No. (See product label)

SPECIFICATION

Product Overview	Recombinant human DOC2B (Gly173-Arg397) fused with N-His tag was expressed in E. coli.
Species	Human
Source	E.coli
ProteinLength	Gly173-Arg397
Form	Lyophilized powder/frozen liquid
Molecular Mass	28.30 kDa
Purity	>90% as determined by SDS-PAGE
Notes	For research use only.
Storage	Use a manual defrost freezer and avoid repeated freeze thaw cycles. Store at 2 to 8 centigrade for one week. Store at -20 to -80 centigrade for twelve months from the date of receipt.
Storage Buffer	0.01M PBS, pH 7.4, 0.02% NLS
Reconstitution	Reconstitute in sterile water for a stock solution.

 Tel: 1-631-559-9269 1-516-512-3133

 Email: info@creative-biomart.com  Fax: 1-631-938-8127

 45-1 Ramsey Road, Shirley, NY 11967, USA

Shipping

They are shipped out with dry ice/blue ice unless customers require otherwise.

GENE INFORMATION
Gene Name

DOC2B double C2-like domains, beta [Homo sapiens (human)]

Official Symbol

DOC2B

Synonyms

DOC2B; double C2-like domains, beta; DOC2BL, double C2 like domains, beta like; double C2-like domain-containing protein beta; doc2-beta; DOC2BL;

Gene ID

8447

mRNA Refseq

NM_003585

Protein Refseq

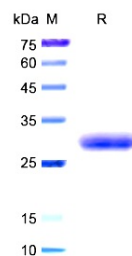
NP_003576

MIM

604568

UniProt ID

Q14184

SDS-PAGE


Tel: 1-631-559-9269 1-516-512-3133

Email: info@creative-biomart.com Fax: 1-631-938-8127

45-1 Ramsey Road, Shirley, NY 11967, USA