

## Recombinant Human DOC2B Protein, GST-tagged

Cat. No. DOC2B-2801H Lot. No. (See product label)

### SPECIFICATION

<b>Product Overview</b>	Human DOC2B full-length ORF ( AAI53025.1, 1 a.a. - 412 a.a.) recombinant protein with GST-tag at N-terminal.
<b>Species</b>	Human
<b>Source</b>	Wheat Germ
<b>Description</b>	There are at least two protein isoforms of the Double C2 protein, namely alpha (DOC2A) and beta (DOC2B), which contain two C2-like domains. DOC2A and DOC2B are encoded by different genes; these genes are at times confused with the unrelated DAB2 gene which was initially named DOC-2. DOC2B is expressed ubiquitously and is suggested to be involved in Ca(2+)-dependent intracellular vesicle trafficking in various types of cells. [provided by RefSeq, Jul 2008]
<b>Molecular Mass</b>	72.27 kDa
<b>AA Sequence</b>	<p>MTLRRRGEKATISIQEHMAIDVCPGPIRPIKQISDYFPRFPRGLPPDAGPRAAAPPDA          PARPAVAGAGRRSPSDGAREDDVDQLFGAYGSSPGPSPGSPARPPAKPPEDE          PDADGYESDDCTALGTLDFSLLYDQENNALHCTITKAKGLKPMDHNGLADPYVKLHL          LPGASKANKLRKTLRNTLNPTWNETLTYYGITDEDMIRKTLRISVCDEDKFRHNEFI          GETRVPLKKLKPNTHTKFNICLEKQLPVDKTEDKSLEERGRILISLKYSSQKQGLLVGI          VRCAHLAAMDANGYSDPYVKTYLRPDVDKKSCHKHTAVKKKTLNPEFNEEFCYEIKH          GDLAKKSLEVTVWDYDIGKSNDFIGGVVLGIHAKGERLKHWFDCCLKNKDKRIERWHT          LTSELPGAVLSD</p>

 Tel: 1-631-559-9269 1-516-512-3133

 Email: [info@creative-biomart.com](mailto:info@creative-biomart.com)  Fax: 1-631-938-8127

 45-1 Ramsey Road, Shirley, NY 11967, USA

<b>Applications</b>	Enzyme-linked Immunoabsorbent Assay Western Blot (Recombinant protein) Antibody Production Protein Array
<b>Notes</b>	Best use within three months from the date of receipt of this protein.
<b>Storage</b>	Store at -80 centigrade. Aliquot to avoid repeated freezing and thawing.
<b>Storage Buffer</b>	50 mM Tris-HCl, 10 mM reduced Glutathione, pH=8.0 in the elution buffer.

## GENE INFORMATION

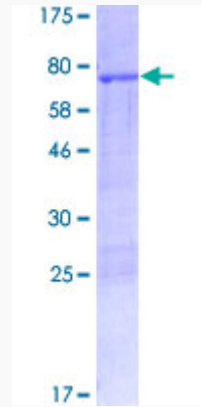
<b>Gene Name</b>	DOC2B double C2-like domains, beta [ Homo sapiens ]
<b>Official Symbol</b>	DOC2B
<b>Synonyms</b>	DOC2B; double C2-like domains, beta; DOC2BL, double C2 like domains, beta like; double C2-like domain-containing protein beta; doc2-beta; DOC2BL;
<b>Gene ID</b>	8447
<b>mRNA Refseq</b>	NM_003585
<b>Protein Refseq</b>	NP_003576
<b>MIM</b>	604568
<b>UniProt ID</b>	Q14184

 Tel: 1-631-559-9269 1-516-512-3133

 Email: [info@creative-biomart.com](mailto:info@creative-biomart.com)  Fax: 1-631-938-8127

 45-1 Ramsey Road, Shirley, NY 11967, USA

**Quality Control  
Testing**



12.5% SDS-PAGE Stained with Coomassie Blue.

 Tel: 1-631-559-9269 1-516-512-3133

 Email: [info@creative-biomart.com](mailto:info@creative-biomart.com)  Fax: 1-631-938-8127

 45-1 Ramsey Road, Shirley, NY 11967, USA