

Recombinant Human DOC2B Protein, Myc/DDK-tagged, C13 and N15-labeled

Cat. No. DOC2B-5574H Lot. No. (See product label)

SPECIFICATION

Product Overview

DOC2B MS Standard C13 and N15-labeled recombinant protein (NP_003576) with a C-terminal MYC/DDK tag, was expressed in HEK293 cells.

Species

Human

Source

HEK293

Description

There are at least two protein isoforms of the Double C2 protein, namely alpha (DOC2A) and beta (DOC2B), which contain two C2-like domains. DOC2A and DOC2B are encoded by different genes; these genes are at times confused with the unrelated DAB2 gene which was initially named DOC-2. DOC2B is expressed ubiquitously and is suggested to be involved in Ca(2+)-dependent intracellular vesicle trafficking in various types of cells.

Molecular Mass

45.8 kDa

AA Sequence

MTLRRRGEKATISIQEHMAIDVCPGPIRPIKQISDYFPRFPRGLPPDAGPRAAAPPDA
 PARPAVAGAGRRSPSDGAREDDVDQLFGAYGSSPGSPGSPARPPAKPPEDE
 PDADGYESDDCTALGTLDFSLLYDQENNALHCTITKAKGLKPMDHNGLADPYVKLHL
 LPGASKANKLRKTLRNTLNPTWNETLTYYGITDEDMIRKTLRISVCEDEDKFRHNEFI
 GETRVPLKCLKPNHTKTFSCLEKQLPVDKTEDKSLEERGRILISLKYSSQKQGLLVGI
 VRCAHLAAMDANGYSDPYVKTYLRPDVDKSKKHKTAVKKKTLNPEFNEEFCYEIKH
 GDLAKKSLEVTVWDYDIGKSNDFIGGVVLGIHAKGERLKHWFDCCLKNKDKRIERWHT

 Tel: 1-631-559-9269 1-516-512-3133

 Email: info@creative-biomart.com  Fax: 1-631-938-8127

 45-1 Ramsey Road, Shirley, NY 11967, USA



LTSELPGAVLSDTRTRPLEQKLISEEDLAANDILDYKDDDDKV

Purity > 80% as determined by SDS-PAGE and Coomassie blue staining

Stability Stable for 3 months from receipt of products under proper storage and handling conditions.

Storage Store at -80 centigrade. Avoid repeated freeze-thaw cycles.

Concentration 50 µg/mL as determined by BCA

Storage Buffer 100 mM glycine, 25 mM Tris-HCl, pH 7.3.

GENE INFORMATION

Gene Name [DOC2B double C2 domain beta \[Homo sapiens \(human\) \]](#)

Official Symbol [DOC2B](#)

Synonyms DOC2B; double C2-like domains, beta; DOC2BL, double C2 like domains, beta like; double C2-like domain-containing protein beta; doc2-beta; DOC2BL;

Gene ID [8447](#)

mRNA Refseq [NM_003585](#)

Protein Refseq [NP_003576](#)

MIM [604568](#)

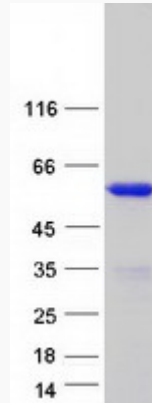
UniProt ID [Q14184](#)

Tel: 1-631-559-9269 1-516-512-3133

Email: info@creative-biomart.com Fax: 1-631-938-8127

45-1 Ramsey Road, Shirley, NY 11967, USA

SDS-PAGE



 Tel: 1-631-559-9269 1-516-512-3133

 Email: info@creative-biomart.com  Fax: 1-631-938-8127

 45-1 Ramsey Road, Shirley, NY 11967, USA