

Recombinant Human DOCK2 Protein, GST-tagged

Cat. No. DOCK2-2805H Lot. No. (See product label)

SPECIFICATION

Product Overview	Human DOCK2 full-length ORF (AAH16996, 1 a.a. - 336 a.a.) recombinant protein with GST-tag at N-terminal.
Species	Human
Source	Wheat Germ
Description	The protein encoded by this gene belongs to the CDM protein family. It is specifically expressed in hematopoietic cells and is predominantly expressed in peripheral blood leukocytes. The protein is involved in remodeling of the actin cytoskeleton required for lymphocyte migration in response to chemokine signaling. It activates members of the Rho family of GTPases, for example RAC1 and RAC2, by acting as a guanine nucleotide exchange factor (GEF) to exchange bound GDP for free GTP. [provided by RefSeq, Oct 2016]
Molecular Mass	62.7 kDa
AA Sequence	MCVCAEDGKTLPVAVPIEDMQRIHLRFMFRHRSSLESKDKGEKNFAMS YVKLMKED GTTLHDGFHDLVVLKGD SKK MEDASAYLTLPSYRHHVENKGATLSRSSSSVGGLSV SSRDVFSISTLVCSTKLTQNVG LLG LLKWRMKPQLEESMRRLFESINNL MKSQYKTTI LLQVAALKYIPSVLHDVEMVFD AKLLS QLLYEFYTCIPPVKLQKQKVQSMNEIVQSNL FKKQECRDILLPVITKELKELLEQKDDMQHQVLERKYCV ELLNSILEVLSYQDAAFTY HHIQEIMVQLLRTVNR TVITMGRDHILIGACCNCGFPSSTPHSLIQWLWG
Applications	Enzyme-linked Immunoabsorbent Assay

 Tel: 1-631-559-9269 1-516-512-3133

 Email: info@creative-biomart.com  Fax: 1-631-938-8127

 45-1 Ramsey Road, Shirley, NY 11967, USA

Western Blot (Recombinant protein)
 Antibody Production
 Protein Array

Notes	Best use within three months from the date of receipt of this protein.
Storage	Store at -80 centigrade. Aliquot to avoid repeated freezing and thawing.
Storage Buffer	50 mM Tris-HCl, 10 mM reduced Glutathione, pH=8.0 in the elution buffer.

GENE INFORMATION

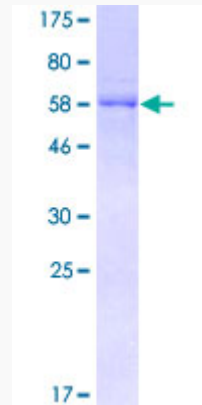
Gene Name	DOCK2 dedicator of cytokinesis 2 [Homo sapiens]
Official Symbol	DOCK2
Synonyms	DOCK2; dedicator of cytokinesis 2; dedicator of cyto kinesis 2; dedicator of cytokinesis protein 2; KIAA0209; dedicator of cyto-kinesis 2; FLJ46592;
Gene ID	1794
mRNA Refseq	NM_004946
Protein Refseq	NP_004937
MIM	603122
UniProt ID	Q92608

 Tel: 1-631-559-9269 1-516-512-3133

 Email: info@creative-biomart.com  Fax: 1-631-938-8127

 45-1 Ramsey Road, Shirley, NY 11967, USA

**Quality Control
Testing**



12.5% SDS-PAGE Stained with Coomassie Blue.

 Tel: 1-631-559-9269 1-516-512-3133

 Email: info@creative-biomart.com  Fax: 1-631-938-8127

 45-1 Ramsey Road, Shirley, NY 11967, USA