

Recombinant Human DOK1 Protein (1-481 aa), His-SUMO-tagged

Cat. No. DOK1-1110H Lot. No. (See product label)

SPECIFICATION

Product Overview	Recombinant Human DOK1 Protein (1-481 aa) is produced by E. coli expression system. This protein is fused with a 6xHis-SUMO tag at the N-terminal. Research Area: Cardiovascular. Protein Description: Full Length.
Species	Human
Source	E.coli
ProteinLength	1-481 aa
Description	DOK proteins are enzymatically inert adaptor or scaffolding proteins. They provide a docking platform for the assembly of multimolecular signaling complexes. DOK1 appears to be a negative regulator of the insulin signaling pathway. Modulates integrin activation by competing with talin for the same binding site on ITGB3.
Form	Tris-based buffer, 50% glycerol
Molecular Mass	68.4 kDa
AA Sequence	MDGAVMEGPLFLQSQRFGTKRWRKTWAVLYPASPFGVARLEFFDHKGSSSSGGGR GSSRRLDCKVIRLAECVSVAPVTVETPPEPGATAFRLDTAQRSHLLAADAPSSAAWV QTLCRNAFPKGSWTLAPTDNPPKLSALEMLENSLYSPTWEGSQFWVTVQRTEAAE RCGLHGYSYVLRVEAERLTLTVGAQSQILEPLLSWPYTLRRYGRDKVMFSFEAGR RCPSGPGTFTFQTAQGNDFQAVETAHRQKAQKGKAGQGHDVLRADSHEGEVAEG

 Tel: 1-631-559-9269 1-516-512-3133

 Email: info@creative-biomart.com  Fax: 1-631-938-8127

 45-1 Ramsey Road, Shirley, NY 11967, USA

KLPSPPGPQELLDSPPALYAEPLDSLRIAPCPSQDSLYSDPLDSTSAQAGEGVQRKK
 PLYWDLYEHAQQQLLKAKLTDPKEDIYDEPEGLAPVPPQGLYDLPREPKDAWWC
 QARVKEEGYELPYNPATDDYAVPPPRSTKPLLAPKPQGPAFPEPGTATGSGIKSHN
 SALYSQVQKSGASGSWDCGLSRVGTDKTGKSEGST

Purity > 90% as determined by SDS-PAGE.

Notes Repeated freezing and thawing is not recommended. Store working aliquots at 4 centigrade for up to one week.

Storage The shelf life is related to many factors, storage state, buffer ingredients, storage temperature and the stability of the protein itself. Generally, the shelf life of liquid form is 6 months at -20 centigrade/-80 centigrade. The shelf life of lyophilized form is 12 months at -20 centigrade/-80 centigrade.

Concentration A hardcopy of COA with concentration instruction is sent along with the products.

GENE INFORMATION

Gene Name [DOK1 docking protein 1, 62kDa \(downstream of tyrosine kinase 1\) \[Homo sapiens \]](#)

Official Symbol [DOK1](#)

Synonyms DOK1; docking protein 1; p62dok; pp62; p62(dok); P62DOK; MGC117395; MGC138860;

Gene ID [1796](#)

mRNA Refseq [NM_001197260](#)

Protein Refseq [NP_001184189](#)

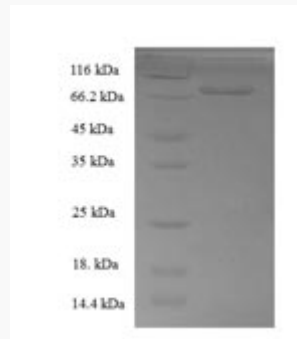
 Tel: 1-631-559-9269 1-516-512-3133

 Email: info@creative-biomart.com  Fax: 1-631-938-8127

 45-1 Ramsey Road, Shirley, NY 11967, USA

MIM 602919

UniProt ID Q99704



(Tris-Glycine gel) Discontinuous SDS-PAGE (reduced) with 5% enrichment gel and 15% separation gel.

Tel: 1-631-559-9269 1-516-512-3133

Email: info@creative-biomart.com Fax: 1-631-938-8127

45-1 Ramsey Road, Shirley, NY 11967, USA