

# Recombinant Human DOK1 Protein, Myc/DDK-tagged, C13 and N15-labeled

**Cat. No.** DOK1-2125H    **Lot. No.** (See product label)

## SPECIFICATION

<b>Product Overview</b>	DOK1 MS Standard C13 and N15-labeled recombinant protein (NP_001372) with a C-terminal MYC/DDK tag, was expressed in HEK293 cells.
<b>Species</b>	Human
<b>Source</b>	HEK293
<b>Description</b>	The protein encoded by this gene is part of a signal transduction pathway downstream of receptor tyrosine kinases. The encoded protein is a scaffold protein that helps form a platform for the assembly of multiprotein signaling complexes. Several transcript variants encoding different isoforms have been found for this gene.
<b>Molecular Mass</b>	52.2 kDa
<b>AA Sequence</b>	<p>MDGAVMEGPLFLQSQRFGTKRWRKTWAVLYPASPFGVARLEFFDHKGSSSSGGGR  GSSRRLDCKVIRLAECVSVAPVTVETPPEPGATAFRLDTAQRSHLLAADAPSSAAWV  QTLCRNAFPKGSWTLAPTDNPPKLSALEMLENSLYSPTWEGSQFWVTVQRTEAAE  RCGLHGYSYVLRVEAERLTLTVGAQSQILEPLLSWPYTLRRYGRDKVMFSFEAGR  RCPSGPGTFTFQTAQGNDIFQAVETAIHRQKAQGKAGQGHDVLRADSHEGEVAEG  KLPSPPGPQELLDSPPALYAEPDLSLRIAPCPSQDSLSDPLDSTSAQAGEGVQRKK  PLYWDLYEHAQQQLLKAKLTDPKEDPIYDEPEGLAPVPPQGLYDLPREPKDAWWC  QARVKEEGYELPYNPATDDYAVPPPRSTKPLLAPKPQGPAPPEPGTATGSGIKSHN  SALYSQVQKSGASGSWDCGLSRVGTDKTGKSEGSTTRTRPLEQKLISEEDLAAND</p>

 Tel: 1-631-559-9269    1-516-512-3133

 Email: [info@creative-biomart.com](mailto:info@creative-biomart.com)     Fax: 1-631-938-8127

 45-1 Ramsey Road, Shirley, NY 11967, USA

	ILDYKDDDDKV
<b>Purity</b>	> 80% as determined by SDS-PAGE and Coomassie blue staining
<b>Stability</b>	Stable for 3 months from receipt of products under proper storage and handling conditions.
<b>Storage</b>	Store at -80 centigrade. Avoid repeated freeze-thaw cycles.
<b>Concentration</b>	50 µg/mL as determined by BCA
<b>Storage Buffer</b>	100 mM glycine, 25 mM Tris-HCl, pH 7.3.
<b>GENE INFORMATION</b>	
<b>Gene Name</b>	DOK1 docking protein 1 [ Homo sapiens (human) ]
<b>Official Symbol</b>	DOK1
<b>Synonyms</b>	DOK1; docking protein 1, 62kDa (downstream of tyrosine kinase 1); docking protein 1, 62kD (downstream of tyrosine kinase 1); docking protein 1; p62dok; pp62; p62(dok); Downstream of tyrosine kinase 1; docking protein 1 (downstream of tyrosine kinase 1); P62DOK; MGC117395; MGC138860;
<b>Gene ID</b>	1796
<b>mRNA Refseq</b>	NM_001381
<b>Protein Refseq</b>	NP_001372
<b>MIM</b>	602919

 Tel: 1-631-559-9269 1-516-512-3133

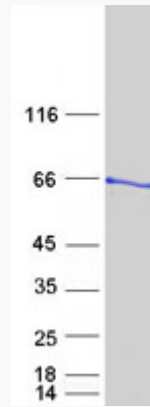
 Email: [info@creative-biomart.com](mailto:info@creative-biomart.com)  Fax: 1-631-938-8127

 45-1 Ramsey Road, Shirley, NY 11967, USA

UniProt ID

Q99704

SDS-PAGE



 Tel: 1-631-559-9269 1-516-512-3133

 Email: [info@creative-biomart.com](mailto:info@creative-biomart.com)  Fax: 1-631-938-8127

 45-1 Ramsey Road, Shirley, NY 11967, USA