

Recombinant Human DOK3 Protein, Myc/DDK-tagged, C13 and N15-labeled

Cat. No. DOK3-1447H Lot. No. (See product label)

SPECIFICATION

Product Overview	DOK3 MS Standard C13 and N15-labeled recombinant protein (NP_079148) with a C-terminal MYC/DDK tag, was expressed in HEK293 cells.
Species	Human
Source	HEK293
Description	DOK3 (Docking Protein 3) is a Protein Coding gene. Among its related pathways are B Cell Receptor Signaling Pathway (sino) and GDNF-Family Ligands and Receptor Interactions. Gene Ontology (GO) annotations related to this gene include insulin receptor binding. An important paralog of this gene is DOK1.
Molecular Mass	53.1 kDa
AA Sequence	MTRGARLRSDARAQLNQLSLDGGTGSGQKKGKCEFPSSLSSVSPGLEAAAALLAVT MDPLETPIKDGILYQQHVKFGKCKWRKVVALLYAGGPPSGVARLESWEVRDGGGLGA AGDRSAGPGRRGERRVIRLADCVSVLPADGESCPRTDGAFLTTTTERSHLLAAQHR QAWMGPICQLAFPGEASSGSTDAQSPKRGLVPMEEINSIYSSWQEVGEFPVVVQ RTEAATRCQLKGPALLVLGPDAIQLREAKGTQALYSWPYHFLRKLGSCKGVFSFEA GRRCHSGEGLFAFSTPCAPDLCRAVAGAIARQRERLPELTRPQPCLPRATSLPSL DTPGELREMPGPEPPTS RKMHLAEPGPQSLPLLLGPEPNDLASGLYASVCKRASG PPGNEHLYENLCVLEASPTLHGGEPEPHEGPGSRSPPTSPIYHNGQDLSWPGPAN DSTLEAQYRRLLLELDQVEGTGRPDPQAGFKAKLVTLISRERRKGPAPCDRPTTRTP

Tel: 1-631-559-9269 1-516-512-3133

Email: info@creative-biomart.com Fax: 1-631-938-8127

45-1 Ramsey Road, Shirley, NY 11967, USA

LEQKLISEEDLAANDILDYKDDDDKV

Purity > 80% as determined by SDS-PAGE and Coomassie blue staining

Stability Stable for 3 months from receipt of products under proper storage and handling conditions.

Storage Store at -80 centigrade. Avoid repeated freeze-thaw cycles.

Concentration 50 µg/mL as determined by BCA

Storage Buffer 100 mM glycine, 25 mM Tris-HCl, pH 7.3.

GENE INFORMATION

Gene Name [DOK3 docking protein 3 \[Homo sapiens \(human\) \]](#)

Official Symbol [DOK3](#)

Synonyms DOK3; docking protein 3; FLJ22570; Dok-like protein; downstream of tyrosine kinase 3; DOKL; FLJ39939;

Gene ID [79930](#)

mRNA Refseq [NM_024872](#)

Protein Refseq [NP_079148](#)

MIM [611435](#)

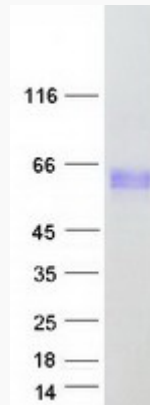
UniProt ID [Q7L591](#)

 Tel: 1-631-559-9269 1-516-512-3133

 Email: info@creative-biomart.com  Fax: 1-631-938-8127

 45-1 Ramsey Road, Shirley, NY 11967, USA

SDS-PAGE



 Tel: 1-631-559-9269 1-516-512-3133

 Email: info@creative-biomart.com  Fax: 1-631-938-8127

 45-1 Ramsey Road, Shirley, NY 11967, USA