

## Recombinant Human DOK3 Protein, GST-tagged

Cat. No. DOK3-2811H Lot. No. (See product label)

### SPECIFICATION

<b>Product Overview</b>	Human DOK3 full-length ORF ( AAH04564.2, 1 a.a. - 330 a.a.) recombinant protein with GST-tag at N-terminal.
<b>Species</b>	Human
<b>Source</b>	Wheat Germ
<b>Description</b>	DOK3 (Docking Protein 3) is a Protein Coding gene. Among its related pathways are Innate Immune System and B Cell Receptor Signaling Pathway (sino). GO annotations related to this gene include insulin receptor binding. An important paralog of this gene is DOK1.
<b>Molecular Mass</b>	62.1 kDa
<b>AA Sequence</b>	MDPLETPIKDGILYQQHVKFGKCCWRKVVALLYAGGPSGVARLESWEVRDGGGLGA AGDRSAGPGRRGERRVIRLADCVSVLPADGESCPRTDGAFLTTTTERSHLLAAQHR QAWMGPICQLAFPGTGEASSGSTDAQSPKRGLVPMEEANSIYSSWQEVGEFPVVVQ RTEAATRCQLKGPALLVLGPDAIQLREAKGTQALYSWPYHFLRKFGSDKILLGTPGV SLLICKGERTDDVSGIILDESLLRAYSVPGAGGHSRVQDSLGPVLRPTFQGERSFLK TSMLRSLLCSCSWRHPRSQPCTQASCLQGSDCPAPHRNSTSAAHTLGTS
<b>Applications</b>	Enzyme-linked Immunoabsorbent Assay Western Blot (Recombinant protein) Antibody Production Protein Array

 Tel: 1-631-559-9269 1-516-512-3133

 Email: [info@creative-biomart.com](mailto:info@creative-biomart.com)  Fax: 1-631-938-8127

 45-1 Ramsey Road, Shirley, NY 11967, USA

<b>Notes</b>	Best use within three months from the date of receipt of this protein.
<b>Storage</b>	Store at -80 centigrade. Aliquot to avoid repeated freezing and thawing.
<b>Storage Buffer</b>	50 mM Tris-HCl, 10 mM reduced Glutathione, pH=8.0 in the elution buffer.

## GENE INFORMATION

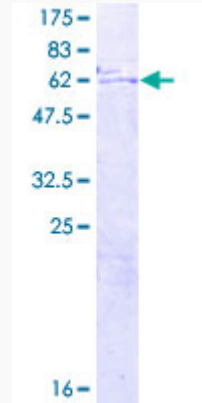
<b>Gene Name</b>	DOK3 docking protein 3 [ Homo sapiens ]
<b>Official Symbol</b>	DOK3
<b>Synonyms</b>	DOK3; docking protein 3; FLJ22570; Dok-like protein; downstream of tyrosine kinase 3; DOKL; FLJ39939;
<b>Gene ID</b>	79930
<b>mRNA Refseq</b>	NM_001144875
<b>Protein Refseq</b>	NP_001138347
<b>MIM</b>	611435
<b>UniProt ID</b>	Q7L591

 Tel: 1-631-559-9269 1-516-512-3133

 Email: [info@creative-biomart.com](mailto:info@creative-biomart.com)  Fax: 1-631-938-8127

 45-1 Ramsey Road, Shirley, NY 11967, USA

**Quality Control  
Testing**



12.5% SDS-PAGE Stained with Coomassie Blue.

 Tel: 1-631-559-9269 1-516-512-3133

 Email: [info@creative-biomart.com](mailto:info@creative-biomart.com)  Fax: 1-631-938-8127

 45-1 Ramsey Road, Shirley, NY 11967, USA