

Recombinant Human DOK7 Protein, Myc/DDK-tagged, C13 and N15-labeled

Cat. No. DOK7-3767H **Lot. No.** (See product label)

SPECIFICATION

Product Overview	DOK7 MS Standard C13 and N15-labeled recombinant protein (NP_775931) with a C-terminal MYC/DDK tag, was expressed in HEK293 cells.
Species	Human
Source	HEK293
Description	The protein encoded by this gene is essential for neuromuscular synaptogenesis. The protein functions in aneural activation of muscle-specific receptor kinase, which is required for postsynaptic differentiation, and in the subsequent clustering of the acetylcholine receptor in myotubes. This protein can also induce autophosphorylation of muscle-specific receptor kinase. Mutations in this gene are a cause of familial limb-girdle myasthenia autosomal recessive, which is also known as congenital myasthenic syndrome type 1B. Alternative splicing results in multiple transcript variants.
Molecular Mass	53.2 kDa
AA Sequence	MTEAALVEGQVKLRDGGKWKSRWLVLRKPSVADCLLMLVYKDKSERIKGLRERSS LTLEDICGLEPGLPYEGLVHTLAIVCLSQAIMLGFDSHEAMCAWDARIRYALGEVHRF HVTVAPGTKLES GPATLHLCNDV LVLARDIPPAVTGQWKLSDLRRYGAVPSGFIFEG GTRCGYWAGVFFLSSAEEGEQISFLFDCIVRGISPTKGPFGLRPVLPDPSPPPGPSTVE ERVAQEALETLQLEKRLSLLSHAGRPGSGGDDRSLSSSSSEASHLDVSASSRLTAW

 Tel: 1-631-559-9269 1-516-512-3133

 Email: info@creative-biomart.com  Fax: 1-631-938-8127

 45-1 Ramsey Road, Shirley, NY 11967, USA

PEQSSSSASTSQEGPRPAAAQAAGEAMVGASRPPPKPLRPRQLQEVRQSSSDS
 GIATGSHSSYSSSLSSYAGSSLDVWRATDELGSLLSLPAAGAPEPSLCTCLPGTVEY
 QVPTSLRAHYDTPRSLCLAPRDHSPPSQGSPGNSAARDSSGGQTSAGCPSGWLGT
 RRRGLVMEAPQDSEATLPGPAPGEPWEAGGPHAGPPPAFFSACPVCGLKVNPP
 PTRTRPLEQKLISEEDLAANDILDYKDDDDKV

Purity > 80% as determined by SDS-PAGE and Coomassie blue staining

Stability Stable for 3 months from receipt of products under proper storage and handling conditions.

Storage Store at -80 centigrade. Avoid repeated freeze-thaw cycles.

Concentration 50 µg/mL as determined by BCA

Storage Buffer 100 mM glycine, 25 mM Tris-HCl, pH 7.3.

GENE INFORMATION

Gene Name [DOK7 docking protein 7 \[Homo sapiens \(human\) \]](#)

Official Symbol [DOK7](#)

Synonyms DOK7; docking protein 7; C4orf25, chromosome 4 open reading frame 25; protein Dok-7; Dok 7; FLJ33718; FLJ39137; downstream of tyrosine kinase 7; CMS1B; C4orf25; FLJ90556;

Gene ID [285489](#)

mRNA Refseq [NM_173660](#)

 Tel: 1-631-559-9269 1-516-512-3133

 Email: info@creative-biomart.com  Fax: 1-631-938-8127

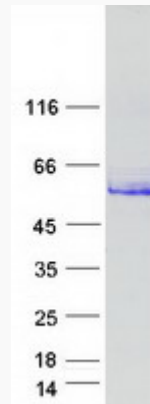
 45-1 Ramsey Road, Shirley, NY 11967, USA

Protein Refseq NP_775931

MIM 610285

UniProt ID Q18PE1

SDS-PAGE



 Tel: 1-631-559-9269 1-516-512-3133

 Email: info@creative-biomart.com  Fax: 1-631-938-8127

 45-1 Ramsey Road, Shirley, NY 11967, USA