

Recombinant Human DOM3Z Protein, GST-tagged

Cat. No. DOM3Z-2819H Lot. No. (See product label)

SPECIFICATION

Product Overview	Human DOM3Z full-length ORF (NP_005501.2, 1 a.a. - 396 a.a.) recombinant protein with GST-tag at N-terminal.
Species	Human
Source	Wheat Germ
Description	This gene localizes to the major histocompatibility complex (MHC) class III region on chromosome 6. The function of its protein product is unknown, but its ubiquitous expression and conservation in both simple and complex eukaryotes suggests that this may be a housekeeping gene. [provided by RefSeq, Jul 2008]
Molecular Mass	71.3 kDa
AA Sequence	MDPRGTKRGAEKTEVAEPRNKLPRPAPSLPTDPALYSGPFPFYRRPSELGCFSLDA QRQYHGDARALRYYSPPPTNGPGPNFDLRDGYPDYQPRDEEVQERLDHLLCWLL EHRGRLEGGPGWLAEAIVTWRGHLTKLLTTPYERQEGWQLAASRFQGTLYLSEVET PNARAQLRARPPLLRELMYMGYKFEQYMCADKPGSSPDPSGEVNTNVAFCVLRSL RLGSHPLLFSGEVDCTDPQAPSTQPPTCYVELKTSKEMHSPGQWRSFYRHKLLKW WAQSFLPGVNVVAGFRNPDGFVSSLKTFPTMKMFYVRNDRDGNPSVCMNFC AAFLSFAQSTVVQDDPRLVHLFSWEPGGPVTVSVHQDAPYAFLPIWYVEAMTQDLP SPPKTPSPK
Applications	Enzyme-linked Immunoabsorbent Assay Western Blot (Recombinant protein)

Tel: 1-631-559-9269 1-516-512-3133

Email: info@creative-biomart.com Fax: 1-631-938-8127

45-1 Ramsey Road, Shirley, NY 11967, USA

	Antibody Production Protein Array
Notes	Best use within three months from the date of receipt of this protein.
Storage	Store at -80 centigrade. Aliquot to avoid repeated freezing and thawing.
Storage Buffer	50 mM Tris-HCl, 10 mM reduced Glutathione, pH=8.0 in the elution buffer.
GENE INFORMATION	
Gene Name	DOM3Z dom-3 homolog Z (C. elegans) [Homo sapiens]
Official Symbol	DOM3Z
Synonyms	DOM3Z; dom-3 homolog Z (C. elegans); DOM 3 (C. elegans) homolog Z; protein Dom3Z; NG6; RAI1; DOM3L;
Gene ID	1797
mRNA Refseq	NM_005510
Protein Refseq	NP_005501
MIM	605996
UniProt ID	O77932

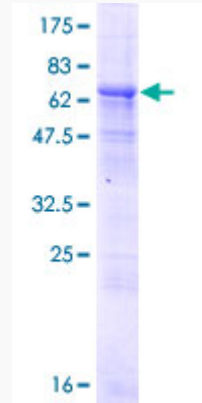
 Tel: 1-631-559-9269 1-516-512-3133

 Email: info@creative-biomart.com  Fax: 1-631-938-8127

 45-1 Ramsey Road, Shirley, NY 11967, USA



Quality Control
Testing



12.5% SDS-PAGE Stained with Coomassie Blue.

Tel: 1-631-559-9269 1-516-512-3133

Email: info@creative-biomart.com Fax: 1-631-938-8127

45-1 Ramsey Road, Shirley, NY 11967, USA