

Recombinant Human DPCR1 Protein, GST-tagged

Cat. No. DPCR1-2823H Lot. No. (See product label)

SPECIFICATION

Product Overview	Human DPCR1 full-length ORF (NP_543146.1, 1 a.a. - 235 a.a.) recombinant protein with GST-tag at N-terminal.
Species	Human
Source	Wheat Germ
Description	DPCR1 (Diffuse Panbronchiolitis Critical Region 1) is a Protein Coding gene. Diseases associated with DPCR1 include Panbronchiolitis, Diffuse.
Molecular Mass	52.1 kDa
AA Sequence	MTQVTEKSTEHPEKTTSTTEKTRRTPKPTLYSEKTICTKGKNTPVPEKPTENLGNTT LTTETIKAPVKSTENPEKTA AVTKTIKPSVKVTGDKSLTTTSSHLNKTEVTHQVPTGSF TLITSRTLKSSITSEATGNESHPLYLNKDGSKGIHAGQMGENDSFPAWAIVIVVLVAVI LLLVFLGLIFLVSYMMRTRRTLQNTQYND AEEGGPNSYPVYLMEQQNLGMGQIP SPR
Applications	Enzyme-linked Immunoabsorbent Assay Western Blot (Recombinant protein) Antibody Production Protein Array
Notes	Best use within three months from the date of receipt of this protein.

 Tel: 1-631-559-9269 1-516-512-3133

 Email: info@creative-biomart.com  Fax: 1-631-938-8127

 45-1 Ramsey Road, Shirley, NY 11967, USA

Storage Store at -80 centigrade. Aliquot to avoid repeated freezing and thawing.

Storage Buffer 50 mM Tris-HCl, 10 mM reduced Glutathione, pH=8.0 in the elution buffer.

GENE INFORMATION

Gene Name [DPCR1 diffuse panbronchiolitis critical region 1 \[Homo sapiens \]](#)

Official Symbol [DPCR1](#)

Synonyms DPCR1; diffuse panbronchiolitis critical region 1; diffuse panbronchiolitis critical region protein 1; bCX105N19.6; PBLT; MGC126710; MGC126712;

Gene ID [135656](#)

mRNA Refseq [NM_080870](#)

Protein Refseq [NP_543146](#)

MIM [613928](#)

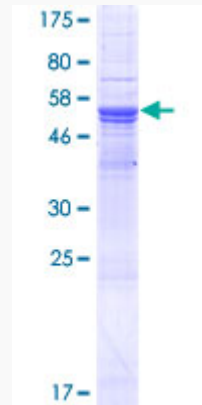
UniProt ID [Q3MIW9](#)

 Tel: 1-631-559-9269 1-516-512-3133

 Email: info@creative-biomart.com  Fax: 1-631-938-8127

 45-1 Ramsey Road, Shirley, NY 11967, USA

**Quality Control
Testing**



12.5% SDS-PAGE Stained with Coomassie Blue.

 Tel: 1-631-559-9269 1-516-512-3133

 Email: info@creative-biomart.com  Fax: 1-631-938-8127

 45-1 Ramsey Road, Shirley, NY 11967, USA