

Recombinant Human DPEP1 Protein (Full Length), N-His tagged

Cat. No. DPEP1-12H Lot. No. (See product label)

SPECIFICATION

Product Overview	Purified recombinant protein of Human dipeptidase 1 (renal) (DPEP1), transcript variant 1, full length, with N-terminal His tag, expressed in E. coli.
Species	Human
Source	E.coli
ProteinLength	Full Length
Description	The protein encoded by this gene is a kidney membrane enzyme involved in the metabolism of glutathione and other similar proteins by dipeptide hydrolysis. The encoded protein is known to regulate leukotriene activity by catalyzing the conversion of leukotriene D4 to leukotriene E4. This protein uses zinc as a cofactor and acts as a disulfide-linked homodimer.
Molecular Mass	45.5 kDa
Purity	> 80% as determined by SDS-PAGE and Coomassie blue staining
Applications	Cell culture: For culture applications, please filter before use. Note that you may experience some loss of protein during the filtration process.
Stability	Stable for 12 months from the date of receipt of the product under proper storage and handling conditions. Avoid repeated freeze-thaw cycles.

 Tel: 1-631-559-9269 1-516-512-3133

 Email: info@creative-biomart.com  Fax: 1-631-938-8127

 45-1 Ramsey Road, Shirley, NY 11967, USA

Storage	Store at -80 centigrade.
Concentration	> 50 µg/mL as determined by microplate BCA method
Storage Buffer	50 mM Tris-HCl, pH 8.0, 8 M urea
GENE INFORMATION	
Gene Name	DPEP1 dipeptidase 1 [Homo sapiens (human)]
Official Symbol	DPEP1
Synonyms	DPEP1; dipeptidase 1; MDP; RDP; MBD1; dipeptidase 1; beta-lactamase; dehydropeptidase-I; dipeptidase 1 (renal); hRDP; microsomal dipeptidase; renal dipeptidase; testicular tissue protein Li 57; EC 3.4.13.19; EC 3.5.2.6
Gene ID	1800
mRNA Refseq	NM_004413
Protein Refseq	NP_004404
MIM	179780
UniProt ID	P16444

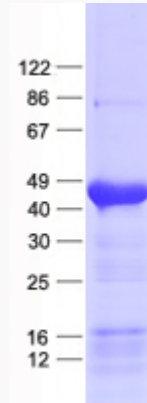
 Tel: 1-631-559-9269 1-516-512-3133

 Email: info@creative-biomart.com  Fax: 1-631-938-8127

 45-1 Ramsey Road, Shirley, NY 11967, USA



SDS-PAGE



Tel: 1-631-559-9269 1-516-512-3133

Email: info@creative-biomart.com Fax: 1-631-938-8127

45-1 Ramsey Road, Shirley, NY 11967, USA