

## Recombinant Human DPEP2 protein, His-tagged

Cat. No. DPEP2-4671H Lot. No. (See product label)

### SPECIFICATION

**Product Overview** Recombinant Human DPEP2 protein(Q9H4A9)(33-463 aa), fused with C-terminal His tag, was expressed in Yeast.

**Species** Human

**Source** Yeast

**ProteinLength** 33-463 aa

**Form** For liquid formulations, the standard storage buffer consists of a Tris or PBS based solution supplemented with 5-50% glycerol. When provided as lyophilized powder, the product undergoes freeze-drying from a Tris- or PBS-based formulation containing 6% trehalose, adjusted to pH 8.0 prior to the lyophilization process.

**Molecular Mass** 50.5 kDa

**AASequence**

```

AYTTPGPPRALTTLGAPRAHTMPGTYAPSTTLSSPSTQGLQEQRALMRDFPLVDG
HNDLPLVLRQVYQKGLQDVNLRNFSYGQTSLDRLRDGLVGAQFWSAYVPCQTQDR
DALRLTLEQIDLIRRMCASYSLELVTSKALNDTQKLACLIGVEGGHSLDNSLSILRT
FYMLGVRYLTLTHTCNTPWAESSAKGVHSFYNNISGLTDFGEKVVAEMNRLGMMV
DLSHVSDAVARRALEVSQAPVIFSHSAARGVCNSARNVPDDILQLLKKNGGVVMVSL
SMGVIQCNPSANVSTVADHFDHIKAVIGSKFIGIGGDYDGAGKFPQGLEDVSTYPVLI
EELLSRGWSEELQGVLRGNLLRVFRQVEKVQEEKWQSPLEDKFPDEQLSSSCH
SDLSRLRQRQSLTSGQELTEIPIHWTAKLPAKWSVS
    
```

 Tel: 1-631-559-9269 1-516-512-3133

 Email: [info@creative-biomart.com](mailto:info@creative-biomart.com)  Fax: 1-631-938-8127

 45-1 Ramsey Road, Shirley, NY 11967, USA

**Purity** Greater than 85% as determined by SDS-PAGE.

**Storage** Store at -20°C/-80°C upon receipt, aliquoting is necessary for mutiple use. Avoid repeated freeze-thaw cycles.

**Reconstitution** Please reconstitute protein indeionized sterile water to a concentration of 0.1-1.0 mg/mL. Aliquot for long-term storage at -80°C.

## GENE INFORMATION

**Gene Name** [DPEP2 dipeptidase 2 \[ Homo sapiens \]](#)

**Official Symbol** [DPEP2](#)

**Synonyms** DPEP2; dipeptidase 2; MBD2;

**Gene ID** [64174](#)

**mRNA Refseq** [NM\\_022355](#)

**Protein Refseq** [NP\\_071750](#)

**MIM** [609925](#)

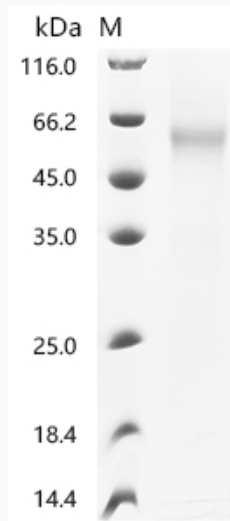
**UniProt ID** [Q9H4A9](#)

 Tel: 1-631-559-9269 1-516-512-3133

 Email: [info@creative-biomart.com](mailto:info@creative-biomart.com)  Fax: 1-631-938-8127

 45-1 Ramsey Road, Shirley, NY 11967, USA

**SDS-PAGE**



 Tel: 1-631-559-9269 1-516-512-3133

 Email: [info@creative-biomart.com](mailto:info@creative-biomart.com)  Fax: 1-631-938-8127

 45-1 Ramsey Road, Shirley, NY 11967, USA