

# Recombinant Human DPH2 Protein (1-489 aa), His-SUMO-tagged

**Cat. No.** DPH2-1111H    **Lot. No.** (See product label)

## SPECIFICATION

**Product Overview**      Recombinant Human DPH2 Protein (1-489 aa) is produced by E. coli expression system. This protein is fused with a 6xHis-SUMO tag at the N-terminal. Research Area: Cell Biology. Protein Description: Full Length.

**Species**      Human

**Source**      E.coli

**ProteinLength**      1-489 aa

**Description**      Required for the first step in the synthesis of diphthamide, a post-translational modification of histidine which occurs in translation elongation factor 2 (EEF2).

**Form**      Tris-based buffer, 50% glycerol

**Molecular Mass**      68.1 kDa

**AA Sequence**

```
MESMFSSPAEAAALQRETGVPGLLTPLPDLG VYELERVAGFVRDLGCERVALQFPD
QLLGDAVAVAAARLEETTGSKMFI LGDTAYGSCCV DVLGAEQAGA QALIHFGPA CLSP
PARPLPVAFVLRQRSVALELCVKAFE AQNPDPKAPV VLLSE PACAHAL EALATLLRP
RYLDLLVSSPAFPQPVGSLSP EPMPLERFGR RFP LAPGRRLEEY GAFYVGGSKASP
DPDLDPDLSRLLL GWAPGQPFS SCCPDTGKTQ DEGARAGRL RARRRYL VERARDA
RVVGLLAGTLGVAQHREALAHLRNLTQAAGKRSYVLALGRPTPAKLANFPEVDVFL
LACPLGALAPQLSGSFFQPILAPCELEAACNPAWPPPGLAPHLTHYADLLPGSPFHV
```

 Tel: 1-631-559-9269    1-516-512-3133

 Email: [info@creative-biomart.com](mailto:info@creative-biomart.com)     Fax: 1-631-938-8127

 45-1 Ramsey Road, Shirley, NY 11967, USA

ALPPPESELWETPDVSLITGDLRPPPAWKSSNDHGSLALTPRPQLELAESSPAASFL  
SSRSWQGLEPRLGQTPVTEAVSGRRGIAIAYEDEGSG

**Purity** > 90% as determined by SDS-PAGE.

**Notes** Repeated freezing and thawing is not recommended. Store working aliquots at 4 centigrade for up to one week.

**Storage** The shelf life is related to many factors, storage state, buffer ingredients, storage temperature and the stability of the protein itself. Generally, the shelf life of liquid form is 6 months at -20 centigrade/-80 centigrade. The shelf life of lyophilized form is 12 months at -20 centigrade/-80 centigrade.

**Concentration** A hardcopy of COA with concentration instruction is sent along with the products.

## GENE INFORMATION

**Gene Name** [DPH2 DPH2 homolog \(S. cerevisiae\) \[ Homo sapiens \]](#)

**Official Symbol** [DPH2](#)

**Synonyms** DPH2; DPH2-like 2; DPH2L2;

**Gene ID** [1802](#)

**mRNA Refseq** [NM\\_001039589](#)

**Protein Refseq** [NP\\_001034678](#)

**MIM** [603456](#)

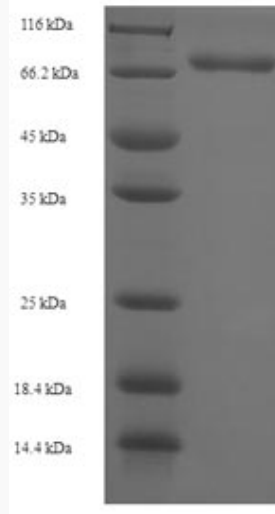
 Tel: 1-631-559-9269 1-516-512-3133

 Email: [info@creative-biomart.com](mailto:info@creative-biomart.com)  Fax: 1-631-938-8127

 45-1 Ramsey Road, Shirley, NY 11967, USA

UniProt ID

Q9BQC3



(Tris-Glycine gel) Discontinuous SDS-PAGE (reduced) with 5% enrichment gel and 15% separation gel.

 Tel: 1-631-559-9269 1-516-512-3133

 Email: [info@creative-biomart.com](mailto:info@creative-biomart.com)  Fax: 1-631-938-8127

 45-1 Ramsey Road, Shirley, NY 11967, USA