

Recombinant Human DPH2 Protein, GST-tagged

Cat. No. DPH2-2831H Lot. No. (See product label)

SPECIFICATION

Product Overview	Human DPH2 full-length ORF (AAH16956, 1 a.a. - 489 a.a.) recombinant protein with GST-tag at N-terminal.
Species	Human
Source	Wheat Germ
Description	This gene is one of two human genes similar to the yeast gene dph2. The yeast gene was identified by its ability to complement a diphthamide mutant strain, and thus probably functions in diphthamide biosynthesis. Diphthamide is a post-translationally modified histidine residue present in elongation factor 2 (EF2) that is the target of diphtheria toxin ADP-ribosylation. Multiple transcript variants encoding different isoforms have been found for this gene. [provided by RefSeq, Jan 2016]
Molecular Mass	79.53 kDa
AA Sequence	MESMFSSPAEALQRETGVPGLLTPLPDLG VYELERVAGFVRDLGCERVALQFPD QLLGDAVAVAAARLEETTGSKMFI LGDTAYGSCCV DVLGAEQAGA QALIHFGPA CLSP PARPLPVAFVLRQRSVALELCVKAFE AQNPDPKAPV VLLSE PACAHALEALATLLRP RYDLLLVSSPAFPQPVGSL SPEPMLERFGRRFPLAPGRRLEEY GAFYVGGSKASP DPDLDPDLSRLLL GWAPGQP FSSCCPDTGKTQDEGARAGRLRARRRYLVERARDA RVVGLLAGTLGVAQHREALAHLRNLTQAAGKRSYVLALGRPTPAKLANFPEVDV FVL LACPLGALAPQLSGSFFQPILAPCELEAACNPAWPPPGLAPHLTHYADLLPGSPFHV ALPPPESELWETPDVSLITGDLRPPP AWKSSNDHGSLALT PRPQLELAESSPAASFL

 Tel: 1-631-559-9269 1-516-512-3133

 Email: info@creative-biomart.com  Fax: 1-631-938-8127

 45-1 Ramsey Road, Shirley, NY 11967, USA

SSRSWQGLEPRLGQTPVTEAVSGRRGIAIAYEDEGSG

Applications

Enzyme-linked Immunoabsorbent Assay
 Western Blot (Recombinant protein)
 Antibody Production
 Protein Array

Notes

Best use within three months from the date of receipt of this protein.

Storage

Store at -80 centigrade. Aliquot to avoid repeated freezing and thawing.

Storage Buffer

50 mM Tris-HCl, 10 mM reduced Glutathione, pH=8.0 in the elution buffer.

GENE INFORMATION

Gene Name

DPH2 DPH2 homolog (*S. cerevisiae*) [*Homo sapiens*]

Official Symbol

DPH2

Synonyms

DPH2; DPH2 homolog (*S. cerevisiae*); diphtheria toxin resistance protein required for diphthamide biosynthesis like 2 (*S. cerevisiae*) , DPH2 like 2 (*S. cerevisiae*) , DPH2L2; diphthamide biosynthesis protein 2; DPH2-like 2; diphthamide biosynthesis-like protein 2; diphthamide biosynthesis protein 2 homolog-like 2; diphtheria toxin resistance protein required for diphthamide biosynthesis-like 2; DPH2L2;

Gene ID

1802

mRNA Refseq

NM_001039589

Protein Refseq

NP_001034678

 Tel: 1-631-559-9269 1-516-512-3133

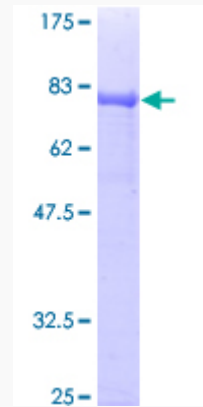
 Email: info@creative-biomart.com  Fax: 1-631-938-8127

 45-1 Ramsey Road, Shirley, NY 11967, USA

MIM 603456

UniProt ID Q9BQC3

**Quality Control
Testing**



12.5% SDS-PAGE Stained with Coomassie Blue.

 Tel: 1-631-559-9269 1-516-512-3133

 Email: info@creative-biomart.com  Fax: 1-631-938-8127

 45-1 Ramsey Road, Shirley, NY 11967, USA