

Recombinant Human DPM2 Protein, Myc/DDK-tagged, C13 and N15-labeled

Cat. No. DPM2-1501H **Lot. No.** (See product label)

SPECIFICATION

Product Overview	DPM2 MS Standard C13 and N15-labeled recombinant protein (NP_003854) with a C-terminal MYC/DDK tag, was expressed in HEK293 cells.
Species	Human
Source	HEK293
Description	Dolichol-phosphate mannose (Dol-P-Man) serves as a donor of mannosyl residues on the luminal side of the endoplasmic reticulum (ER). Lack of Dol-P-Man results in defective surface expression of GPI-anchored proteins. Dol-P-Man is synthesized from GDP-mannose and dolichol-phosphate on the cytosolic side of the ER by the enzyme dolichyl-phosphate mannosyltransferase. The protein encoded by this gene is a hydrophobic protein that contains 2 predicted transmembrane domains and a putative ER localization signal near the C terminus. This protein associates with DPM1 in vivo and is required for the ER localization and stable expression of DPM1 and also enhances the binding of dolichol-phosphate to DPM1.
Molecular Mass	9.3 kDa
AA Sequence	MATGTDQVVGLGLVAVSLIIFTYYTAWVILLPFIDSQHVHVKYFLPRAYAVAIPLAAGLL LLLFVGLFISYVMLKSKRVTKKAQTRTRPLEQKLISEEDLAANDILDYKDDDDKV
Purity	> 80% as determined by SDS-PAGE and Coomassie blue staining

 Tel: 1-631-559-9269 1-516-512-3133

 Email: info@creative-biomart.com  Fax: 1-631-938-8127

 45-1 Ramsey Road, Shirley, NY 11967, USA

Stability	Stable for 3 months from receipt of products under proper storage and handling conditions.
Storage	Store at -80 centigrade. Avoid repeated freeze-thaw cycles.
Concentration	50 µg/mL as determined by BCA
Storage Buffer	100 mM glycine, 25 mM Tris-HCl, pH 7.3.

GENE INFORMATION

Gene Name	DPM2 dolichyl-phosphate mannosyltransferase subunit 2, regulatory [Homo sapiens (human)]
Official Symbol	DPM2
Synonyms	DPM2; dolichyl-phosphate mannosyltransferase polypeptide 2, regulatory subunit; dolichol phosphate-mannose biosynthesis regulatory protein; MGC21559; MGC111193; dolichol phosphate-mannose synthase 2; FLJ80013;
Gene ID	8818
mRNA Refseq	NM_003863
Protein Refseq	NP_003854
MIM	603564
UniProt ID	O94777

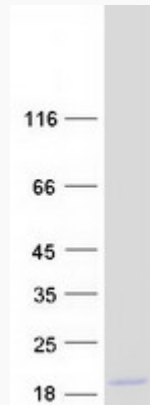
 Tel: 1-631-559-9269 1-516-512-3133

 Email: info@creative-biomart.com  Fax: 1-631-938-8127

 45-1 Ramsey Road, Shirley, NY 11967, USA



SDS-PAGE



Tel: 1-631-559-9269 1-516-512-3133

Email: info@creative-biomart.com Fax: 1-631-938-8127

45-1 Ramsey Road, Shirley, NY 11967, USA