

# Recombinant Human DPP10 Protein (Leu56-Glu796), C-His tagged

Cat. No. DPP10-2176H Lot. No. (See product label)

## SPECIFICATION

<b>Product Overview</b>	Recombinant human DPP10 (Leu56-Glu796) fused with C-terminal His tag was expressed in Mammalian cells.
<b>Species</b>	Human
<b>Source</b>	Mammalian Cells
<b>ProteinLength</b>	Leu56-Glu796
<b>Form</b>	Lyophilized powder/frozen liquid
<b>Molecular Mass</b>	81.51 kDa
<b>Purity</b>	>90% as determined by SDS-PAGE
<b>Notes</b>	For research use only.
<b>Storage</b>	Use a manual defrost freezer and avoid repeated freeze thaw cycles. Store at 2 to 8 centigrade for one week. Store at -20 to -80 centigrade for twelve months from the date of receipt.
<b>Storage Buffer</b>	Supplied as solution form in PBS or lyophilized from PBS.
<b>Reconstitution</b>	Reconstitute in sterile water for a stock solution.

 Tel: 1-631-559-9269 1-516-512-3133

 Email: [info@creative-biomart.com](mailto:info@creative-biomart.com)  Fax: 1-631-938-8127

 45-1 Ramsey Road, Shirley, NY 11967, USA

**Shipping** They are shipped out with dry ice/blue ice unless customers require otherwise.

## GENE INFORMATION

**Gene Name** DPP10 dipeptidyl-peptidase 10 (non-functional) [ Homo sapiens (human) ]

**Official Symbol** DPP10

**Synonyms** DPP10; dipeptidyl-peptidase 10 (non-functional); dipeptidyl peptidase 10, dipeptidylpeptidase 10; inactive dipeptidyl peptidase 10; DPRP3; DPP X; DPRP-3; dipeptidyl peptidase X; dipeptidyl peptidase 10; dipeptidyl peptidase like protein 2; dipeptidyl peptidase-like protein 2; dipeptidyl peptidase IV-related protein 3; DPL2; DPPY;

**Gene ID** 57628

**mRNA Refseq** NM\_001004360

**Protein Refseq** NP\_001004360

**MIM** 608209

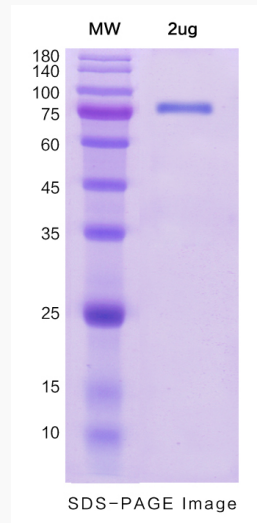
**UniProt ID** Q8N608

 Tel: 1-631-559-9269 1-516-512-3133

 Email: [info@creative-biomart.com](mailto:info@creative-biomart.com)  Fax: 1-631-938-8127

 45-1 Ramsey Road, Shirley, NY 11967, USA

**SDS-PAGE**



 Tel: 1-631-559-9269 1-516-512-3133

 Email: [info@creative-biomart.com](mailto:info@creative-biomart.com)  Fax: 1-631-938-8127

 45-1 Ramsey Road, Shirley, NY 11967, USA