

Recombinant Human DPP10 Protein, GST-tagged

Cat. No. DPP10-2839H Lot. No. (See product label)

SPECIFICATION

Product Overview	Human DPP10 full-length ORF (AAH30832.1, 1 a.a. - 796 a.a.) recombinant protein with GST-tag at N-terminal.
Species	Human
Source	Wheat Germ
Description	<p>This gene encodes a single-pass type II membrane protein that is a member of the S9B family in clan SC of the serine proteases. This protein has no detectable protease activity, most likely due to the absence of the conserved serine residue normally present in the catalytic domain of serine proteases. However, it does bind specific voltage-gated potassium channels and alters their expression and biophysical properties. Mutations in this gene have been associated with asthma. Alternate transcriptional splice variants, encoding different isoforms, have been characterized. [provided by RefSeq, Jul 2008]</p>
Molecular Mass	117.3 kDa
AA Sequence	<p>MNQTASVSHHIKCQPSKTIKELGNSNPPQRNWKGIAIALLVILVVC SLITMSVILLTPDE LTNSSETRL SLEDLFRKDFVLHDPEARWINDTDVVYKSENGHVIKLN IETNATLLLEN TTFVTFKASRHSVSPDLKYVLLAYDVKQIFHYSY TASYVIYNIHTRE VWELNPPEVED SVLQYAAWGVQGGQLIYIFENNIYYQPDIKSSSLRLTSSGKEE IIFNGIADWLYEEELL HSHIAHWWSPDGERLAF LMINDSLVPTMVIPRFTGALY PKGKQYPYPKAGQMNPTIK LYVVNLYGPTH TLELMPPDSFKSREYYITMVKWVSNTKT VVRWLNRAQNISILT VCE</p>

 Tel: 1-631-559-9269 1-516-512-3133

 Email: info@creative-biomart.com  Fax: 1-631-938-8127

 45-1 Ramsey Road, Shirley, NY 11967, USA

TTTGACSKKYEMTSDTWLSQQNEEPVFSRDGSKFFMTVPVKQGGRRGEFHFIAMFLI
 QSKSEQITVRHLTSGNWEVIKILAYDETTQKIYFLSTESSRGRQLYSASTEGLLNRR
 CISCNFMKEQCTYFDASFSPMNQHFLFCEGPRVPVVSLSHSTDNPAKYFILESNSML
 KEAILKKKIGKPEIKILHIDDYELPLQLSLPKDFMDRNQYALLIMDEEPGGQLVTDKFH
 IDWDSVLIDMDNVIVARFDGRGSGFQGLKILQEIHRRLLGSVEVKDQITAVKFLKLPYI
 DSKRLSIFGKGYGGYIASMILKSDEKLFKCGSVVAPITDLKLYASAFSERYLGMPSKE
 ESTYQAASVLHNVHGLKEENILIIHGTADTKVHFQHSaelikHLIKAGVNYTMQVYPDE
 GHNVSEKSKYHLYSTILKFFSDCLKEEISVLPQEPEEDE

Applications

Enzyme-linked Immunoabsorbent Assay
 Western Blot (Recombinant protein)
 Antibody Production
 Protein Array

Notes

Best use within three months from the date of receipt of this protein.

Storage

Store at -80 centigrade. Aliquot to avoid repeated freezing and thawing.

Storage Buffer

50 mM Tris-HCl, 10 mM reduced Glutathione, pH=8.0 in the elution buffer.

GENE INFORMATION

Gene Name

DPP10 dipeptidyl-peptidase 10 (non-functional) [Homo sapiens]

Official Symbol

DPP10

Synonyms

DPP10; dipeptidyl-peptidase 10 (non-functional); dipeptidyl peptidase 10 ,
 dipeptidylpeptidase 10; inactive dipeptidyl peptidase 10; DPRP3; DPP X; DPRP-3;
 dipeptidyl peptidase X; dipeptidyl peptidase 10; dipeptidyl peptidase like protein 2;
 dipeptidyl peptidase-like protein 2; dipeptidyl peptidase IV-related protein 3; DPL2;
 DPPY;

 Tel: 1-631-559-9269 1-516-512-3133

 Email: info@creative-biomart.com  Fax: 1-631-938-8127

 45-1 Ramsey Road, Shirley, NY 11967, USA

Gene ID 57628

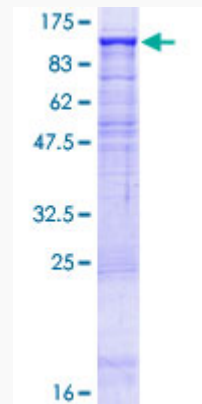
mRNA Refseq NM_001004360

Protein Refseq NP_001004360

MIM 608209

UniProt ID Q8N608

**Quality Control
Testing**



12.5% SDS-PAGE Stained with Coomassie Blue.

 Tel: 1-631-559-9269 1-516-512-3133

 Email: info@creative-biomart.com  Fax: 1-631-938-8127

 45-1 Ramsey Road, Shirley, NY 11967, USA