

Recombinant Human DPP3 Protein (Met1-Ala737), N-His tagged

Cat. No. DPP3-1673H **Lot. No.** (See product label)

SPECIFICATION

Product Overview	Recombinant human DPP3 (Met1-Ala737) fused with N-terminal His tag was expressed in E. coli.
Species	Human
Source	E.coli
ProteinLength	Met1-Ala737
Form	Lyophilized powder/frozen liquid
Molecular Mass	81.07 kDa
Purity	>90% as determined by SDS-PAGE
Notes	For research use only.
Storage	Use a manual defrost freezer and avoid repeated freeze thaw cycles. Store at 2 to 8 centigrade for one week. Store at -20 to -80 centigrade for twelve months from the date of receipt.
Storage Buffer	Supplied as solution form in PBS or lyophilized from PBS.
Reconstitution	Reconstitute in sterile water for a stock solution.

 Tel: 1-631-559-9269 1-516-512-3133

 Email: info@creative-biomart.com  Fax: 1-631-938-8127

 45-1 Ramsey Road, Shirley, NY 11967, USA

Shipping They are shipped out with dry ice/blue ice unless customers require otherwise.

GENE INFORMATION

Gene Name DPP3 dipeptidyl-peptidase 3 [Homo sapiens (human)]

Official Symbol DPP3

Synonyms DPP3; dipeptidyl-peptidase 3; dipeptidylpeptidase 3, dipeptidylpeptidase III; dipeptidyl peptidase 3; DPP III; dipeptidyl peptidase III; dipeptidyl arylamidase III; dipeptidyl aminopeptidase III; DPPIII; FLJ11387; FLJ22331;

Gene ID 10072

mRNA Refseq NM_001256670

Protein Refseq NP_001243599

MIM 606818

UniProt ID Q9NY33

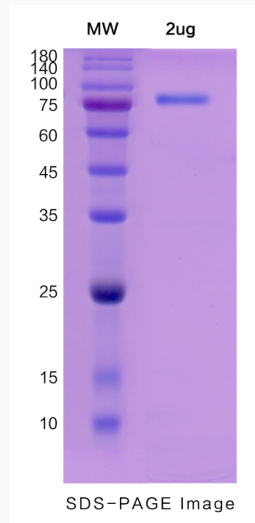
 Tel: 1-631-559-9269 1-516-512-3133

 Email: info@creative-biomart.com  Fax: 1-631-938-8127

 45-1 Ramsey Road, Shirley, NY 11967, USA



SDS-PAGE



Tel: 1-631-559-9269 1-516-512-3133

Email: info@creative-biomart.com Fax: 1-631-938-8127

45-1 Ramsey Road, Shirley, NY 11967, USA