

## Recombinant Human DPP3 Protein, GST-tagged

Cat. No. DPP3-2841H Lot. No. (See product label)

### SPECIFICATION

<b>Product Overview</b>	Human DPP3 full-length ORF ( AAH01446, 1 a.a. - 737 a.a.) recombinant protein with GST-tag at N-terminal.
<b>Species</b>	Human
<b>Source</b>	Wheat Germ
<b>Description</b>	This gene encodes a protein that is a member of the M49 family of metallopeptidases. This cytoplasmic protein binds a single zinc ion with its zinc-binding motif (HELLGH) and has post-proline dipeptidyl aminopeptidase activity, cleaving Xaa-Pro dipeptides from the N-termini of proteins. Increased activity of this protein is associated with endometrial and ovarian cancers. Alternatively spliced transcript variants have been found for this gene. [provided by RefSeq, Feb 2012]
<b>Molecular Mass</b>	106.59 kDa
<b>AA Sequence</b>	MADTQYILPNDIGVSSLDCREAFRLLSPTERLYAYHLSRAAWYGGGLAVLLQTSPEAP YIYALLSRLFRAQDPDQLHQHALAEGLTEEEYQAFLVYAAGVYSNMGNYSFGDTK FVPNLPKEKLERVILGSEAAQQHPEEVRGLWQTCGELMFSLEPRLRHLGLGKEGITT YFSGNCTMEDAKLAQDFLDSQNLSAYNTRLFKEVDGEGKPYEVRLASVLGSEPSL DSEVTSKLSYEFRGSPFQVTRGDYAPILQKVVEQLEKAKAYAANSHQGQMLAQYI ESFTQGSIEAHKRGRSFRWIQDKGPIVESYIGFIESYRDPFGSRGEFEGFVAVVNKAM SAKFERLVASAEQLLKELPWPTFEKDKFLTPDFTSLDVLTFAGSGIPAGINIPNYDDL RQTEGFKNVSLGNVLAVAYATQREKLTFLLEDDKDLYILWKGPSFDVQVGLHELLGH

 Tel: 1-631-559-9269 1-516-512-3133

 Email: [info@creative-biomart.com](mailto:info@creative-biomart.com)  Fax: 1-631-938-8127

 45-1 Ramsey Road, Shirley, NY 11967, USA

GSGKLFVQDEKGFNFDQETVINPETGEQIQSWYRSGETWDSKFSTIASSYEECRA  
 ESVGLYLCLHPQVLEIFGFEGADAEDVIYVNWLNMV RAGLLALEFYTP EAFNWRQAH  
 MQARFVILRVLLEAGEGLVTITPTTGSDGRPDARVRLDRSKIRSVGKPALERFLRRLQ  
 VLKSTGDVAGGRALYEGYATVTDAPPECFLTLRDTVLLRKE SRKLIVQPNT RLEGSD  
 VQLLEYEASAAGLIRSFSE RFPEDGPELEEILTQLATADARFWKGPSEAPSGQA

**Applications**  
 Enzyme-linked Immunoabsorbent Assay  
 Western Blot (Recombinant protein)  
 Antibody Production  
 Protein Array

**Notes**  
 Best use within three months from the date of receipt of this protein.

**Storage**  
 Store at -80 centigrade. Aliquot to avoid repeated freezing and thawing.

**Storage Buffer**  
 50 mM Tris-HCl, 10 mM reduced Glutathione, pH=8.0 in the elution buffer.

## GENE INFORMATION

**Gene Name** [DPP3 dipeptidyl-peptidase 3 \[ Homo sapiens \]](#)

**Official Symbol** [DPP3](#)

**Synonyms**  
 DPP3; dipeptidyl-peptidase 3; dipeptidylpeptidase 3 , dipeptidylpeptidase III;  
 dipeptidyl peptidase 3; DPP III; dipeptidyl peptidase III; dipeptidyl arylamidase III;  
 dipeptidyl aminopeptidase III; DPPIII; FLJ11387; FLJ22331;

**Gene ID** [10072](#)

**mRNA Refseq** [NM\\_001256670](#)

 Tel: 1-631-559-9269 1-516-512-3133

 Email: [info@creative-biomart.com](mailto:info@creative-biomart.com)  Fax: 1-631-938-8127

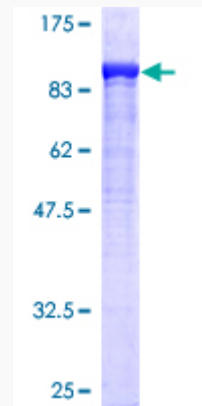
 45-1 Ramsey Road, Shirley, NY 11967, USA

**Protein Refseq** NP\_001243599

**MIM** 606818

**UniProt ID** Q9NY33

**Quality Control  
Testing**



12.5% SDS-PAGE Stained with Coomassie Blue.

 Tel: 1-631-559-9269 1-516-512-3133

 Email: [info@creative-biomart.com](mailto:info@creative-biomart.com)  Fax: 1-631-938-8127

 45-1 Ramsey Road, Shirley, NY 11967, USA