

# Active Recombinant Human DPP4 Protein (29-766aa), C-hlgG-tagged

**Cat. No.** DPP4-10H    **Lot. No.** (See product label)

## SPECIFICATION

<b>Product Overview</b>	Recombinant human DPPIV/CD26 (29-766aa), fused to hlgG-tag at C-terminus, was expressed in HEK293 cell and purified by using conventional chromatography techniques.
<b>Species</b>	Human
<b>Source</b>	HEK293
<b>ProteinLength</b>	29-766 aa
<b>Description</b>	DPP4, dipeptidyl peptidase-4 is a complex enzyme expressed on the surface of most cell types and is a serine exopeptidase that cleaves x-proline dipeptides from the N-terminus of polypeptides. DPP4 protein is associated with intracellular signal transduction, apoptosis and plays an important role in tumor biology. There are at least 63 substrates which can bind specifically to DPP4 enzyme including growth factors, chemokines, neuro peptides. Furthermore, DPP4 plays a major role in glucose metabolism by cleaving incretins such as glucose-dependent insulinotropic polypeptide (GIP) and glucagon-like peptide-1 (GLP-1). Middle East respiratory syndrome coronavirus has been found to bind to DPP4. It is found on the surface of cells in the airways and kidneys.
<b>Form</b>	Liquid
<b>Bio-activity</b>	1.Measured by its binding ability in a functional ELISA with MERS-CoV Spike S1

 Tel: 1-631-559-9269    1-516-512-3133

 Email: [info@creative-biomart.com](mailto:info@creative-biomart.com)     Fax: 1-631-938-8127

 45-1 Ramsey Road, Shirley, NY 11967, USA

Subunit. The ED50 range  $\leq 250$  ng/mL.

2. Measured by its binding ability in a functional ELISA with MERS-CoV Spike RBD. The ED50 range  $\leq 200$  ng/mL.

3. Measured by its binding ability in a functional ELISA with MERS-CoV Spike. The ED50 range  $\leq 120$  ng/mL.

4. Specific activity is  $> 15,000$  pmol/min/ $\mu$ g in which one unit defined as the amount of enzyme that hydrolyze 1 pmole of H-Gly-Pro-AMC.HBr to H-Gly-Pro and AMC per minute at pH 8.0 at 37 centigrade.

**Molecular Mass** 112.1 kDa (977 aa)

**AA Sequence**

NKGTDDATADSRKTYTLTDYLNKNTYRLKLYSLRWISDHEYLYKQENNILVFNAEYGN  
 SSVFLENSTFDEFGHSINDYSISPDGQFILLEYNVVKQWRHSYTASYDIYDLNKRQLIT  
 EERIPNNTQWVTWSPVGHKLAYVWNNDIYVKIEPNLPSYRITWTGKEDIYNGITDWV  
 YEEVFSAAYSALWWSPNGTFLAYAQFNDTEVPLIEYSFYSDSLQYPKTVRVPYPKA  
 GAVNPTVKFFVNTDSLSSVTNATSIQITAPASMLIGDHLYLCDVTWATQERISLQWLR  
 RIQNYSVMDICDYDESSGRWNCLVARQHIEMSTTGWVGRFRPSEPHFTLDGNSFY  
 KIISNEEGYRHICYFQIDKKDCTFITKGTWEVIGIEALTSYLYYISNEYKGMPPGGRNL  
 YKIQLSDYTKVTCLSCELNPERCQYYSVSFSKEAKYYQLRCSGPGLPLYTLHSSVND  
 KGLRVLEDNSALDKMLQNVQMPSKKLDFIILNETKFWYQMILPPHFDKSKKYPLLLDV  
 YAGPCSQKADTVFRLNWATYLASTENIIVASFDGRGSGYQGDKIMHAINRRLGTFEV  
 EDQIEAARQFSKMGFVDNKRIAIWGSYGGYVTSMLVLSGSGVFKCGIAPVSR  
 WEYYDSVYTERYMGLPTPEDNLDHYRNSTVMSRAENFKQVEYLLIHGTADDNVHF  
 QQSAQISKALVDVGVDFQAMWYTDDEDHGIASSTAHQHIYTHMSHFQKCFSLP

**Endotoxin**  $< 1$  EU/ $\mu$ g of protein (determined by LAL method)

**Purity**  $> 95\%$  by SDS-PAGE

**Applications** SDS-PAGE, Enzyme Activity, Bioactivity

 Tel: 1-631-559-9269 1-516-512-3133

 Email: [info@creative-biomart.com](mailto:info@creative-biomart.com)  Fax: 1-631-938-8127

 45-1 Ramsey Road, Shirley, NY 11967, USA


<b>Notes</b>	For research use only. This product is not intended or approved for human, diagnostics or veterinary use.
<b>Storage</b>	Can be stored at +2 to +8 centigrade for 1 week. For long term storage, aliquot and store at -20 to -80 centigrade. Avoid repeated freezing and thawing cycles.
<b>Concentration</b>	0.25 mg/mL (determined by Absorbance at 280 nm)
<b>Storage Buffer</b>	Phosphate-Buffered Saline (pH 7.4) containing 10% glycerol

## GENE INFORMATION

<b>Gene Name</b>	DPP4 dipeptidyl-peptidase 4 [ Homo sapiens (human) ]
<b>Official Symbol</b>	DPP4
<b>Synonyms</b>	DPP4; dipeptidyl-peptidase 4; ADCP2, adenosine deaminase complexing protein 2 , CD26, dipeptidylpeptidase IV (CD26, adenosine deaminase complexing protein 2); dipeptidyl peptidase 4; DPPIV; ADCP-2; DPP IV; dipeptidylpeptidase 4; dipeptidyl peptidase IV; T-cell activation antigen CD26; adenosine deaminase complexing protein 2; dipeptidylpeptidase IV (CD26, adenosine deaminase complexing protein 2); CD26; ADABP; ADCP2; TP103
<b>Gene ID</b>	1803
<b>mRNA Refseq</b>	NM_001935
<b>Protein Refseq</b>	NP_001926
<b>MIM</b>	102720

 Tel: 1-631-559-9269 1-516-512-3133

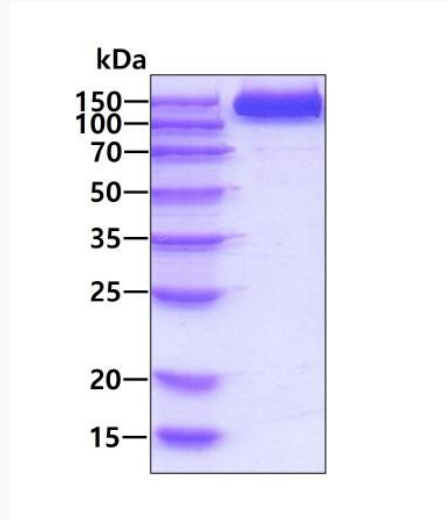
 Email: [info@creative-biomart.com](mailto:info@creative-biomart.com)  Fax: 1-631-938-8127

 45-1 Ramsey Road, Shirley, NY 11967, USA

UniProt ID

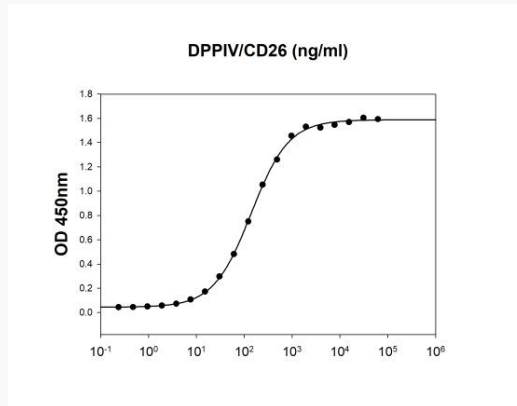
P27487

SDS-PAGE




3  $\mu$ g by SDS-PAGE under reducing condition and visualized by coomassie blue stain


Biological Activity



MERS-CoV Spike S1 Subunit is coated at 2  $\mu$ g/mL (100  $\mu$ L/well) can bind IgK-DPP4. The ED50 range  $\leq$ 250 ng/mL.

 Tel: 1-631-559-9269 1-516-512-3133

 Email: [info@creative-biomart.com](mailto:info@creative-biomart.com)  Fax: 1-631-938-8127

 45-1 Ramsey Road, Shirley, NY 11967, USA