

Recombinant Human DPP4 protein, hFc-tagged

Cat. No. DPP4-269H **Lot. No.** (See product label)

SPECIFICATION

Product Overview	Recombinant Human DPP4 protein(P27487)(Asn29-Pro766), fused with N-terminal hFc tag, was expressed in HEK293.
Species	Human
Source	HEK293
ProteinLength	Asn29-Pro766
Tag	N-hFc
Form	Lyophilized from 0.22µm filtered solution in PBS (pH 7.4). Normally 5% trehalose is added as protectant before lyophilization.
Bio-activity	Immobilized Human DPPIV, hFc Tag at 1 ug/ml (100 ul/well) on the plate. Dose response curve for Biotinylated Anti-DPPIV Antibody, hFc Tag with the EC50 of 17.9 ng/ml determined by ELISA.
Molecular Mass	The protein has a predicted MW of 111.2 kDa. Due to glycosylation, the protein migrates to 115-130 kDa based on Tris-Bis PAGE result.
Endotoxin	Less than 1EU per µg by the LAL method.
Purity	> 95% as determined by Tris-Bis PAGE;> 95% as determined by HPLC

 Tel: 1-631-559-9269 1-516-512-3133

 Email: info@creative-biomart.com  Fax: 1-631-938-8127

 45-1 Ramsey Road, Shirley, NY 11967, USA

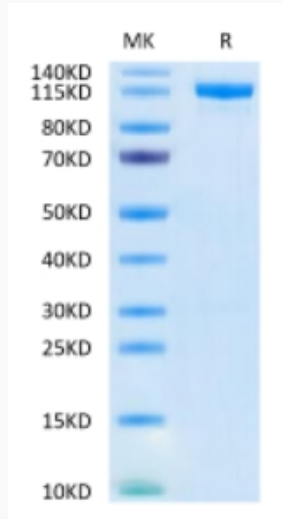
Storage	Reconstituted protein stable at -80°C for 12 months, 4°C for 1 week. Use a manual defrost freezer and avoid repeated freeze-thaw cycles.
Reconstitution	Centrifuge tubes before opening. Reconstituting to a concentration more than 100 µg/ml is recommended. Dissolve the lyophilized protein in distilled water.
GENE INFORMATION	
Gene Name	DPP4 dipeptidyl-peptidase 4 [Homo sapiens]
Official Symbol	DPP4
Synonyms	DPP4; dipeptidyl-peptidase 4; ADCP2, adenosine deaminase complexing protein 2 , CD26, dipeptidylpeptidase IV (CD26, adenosine deaminase complexing protein 2); dipeptidyl peptidase 4; DPPIV; ADCP-2; DPP IV; dipeptidylpeptidase 4; dipeptidyl peptidase IV; T-cell activation antigen CD26; adenosine deaminase complexing protein 2; dipeptidylpeptidase IV (CD26, adenosine deaminase complexing protein 2); CD26; ADABP; ADCP2; TP103;
Gene ID	1803
mRNA Refseq	NM_001935
Protein Refseq	NP_001926
MIM	102720
UniProt ID	P27487

 Tel: 1-631-559-9269 1-516-512-3133

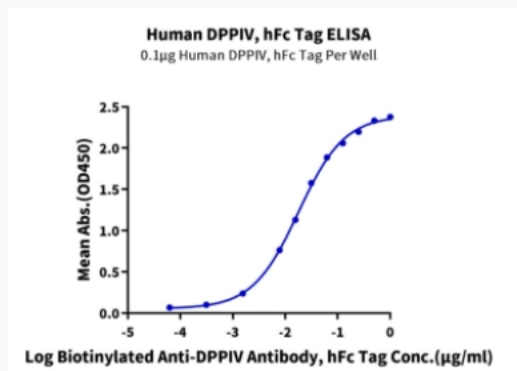
 Email: info@creative-biomart.com  Fax: 1-631-938-8127

 45-1 Ramsey Road, Shirley, NY 11967, USA

Tris-Bis PAGE



ELISA Data



 Tel: 1-631-559-9269 1-516-512-3133

 Email: info@creative-biomart.com  Fax: 1-631-938-8127

 45-1 Ramsey Road, Shirley, NY 11967, USA