

## Recombinant Human DPP4 protein, His-tagged

**Cat. No.** DPP4-4063H    **Lot. No.** (See product label)

### SPECIFICATION

<b>Product Overview</b>	Recombinant Human DPP4 protein(P27487)(Asn29-Pro766), fused with C-terminal His tag, was expressed in HEK293.
<b>Species</b>	Human
<b>Source</b>	HEK293
<b>ProteinLength</b>	Asn29-Pro766
<b>Tag</b>	C-His
<b>Form</b>	Lyophilized from 0.22µm filtered solution in PBS (pH 7.4). Normally 5% trehalose is added as protectant before lyophilization.
<b>Bio-activity</b>	Immobilized Human DPPIV, His Tag at 1ug/ml (100ul/well) on the plate. Dose response curve for Anti-DPPIV Antibody, hFc Tag with the EC50 of 4.2ng/ml determined by ELISA.
<b>Molecular Mass</b>	The protein has a predicted MW of 90.5 kDa. Due to glycosylation, the protein migrates to 91-115 kDa based on Tris-Bis PAGE result.
<b>Endotoxin</b>	Less than 1EU per µg by the LAL method.
<b>Purity</b>	> 95% as determined by Tris-Bis PAGE;> 95% as determined by HPLC

 Tel: 1-631-559-9269    1-516-512-3133

 Email: [info@creative-biomart.com](mailto:info@creative-biomart.com)     Fax: 1-631-938-8127

 45-1 Ramsey Road, Shirley, NY 11967, USA

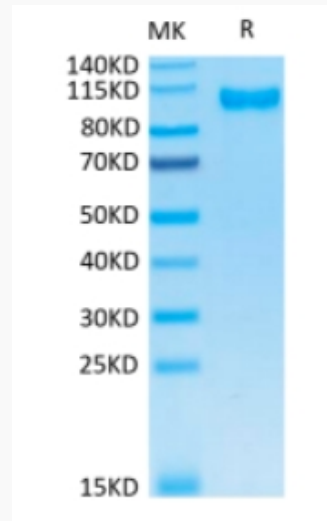
<b>Storage</b>	Reconstituted protein stable at -80°C for 12 months, 4°C for 1 week. Use a manual defrost freezer and avoid repeated freeze-thaw cycles.
<b>Reconstitution</b>	Centrifuge tubes before opening. Reconstituting to a concentration more than 100 µg/ml is recommended. Dissolve the lyophilized protein in distilled water.
<b>GENE INFORMATION</b>	
<b>Gene Name</b>	DPP4 dipeptidyl-peptidase 4 [ Homo sapiens ]
<b>Official Symbol</b>	DPP4
<b>Synonyms</b>	DPP4; dipeptidyl-peptidase 4; ADCP2, adenosine deaminase complexing protein 2 , CD26, dipeptidylpeptidase IV (CD26, adenosine deaminase complexing protein 2); dipeptidyl peptidase 4; DPPIV; ADCP-2; DPP IV; dipeptidylpeptidase 4; dipeptidyl peptidase IV; T-cell activation antigen CD26; adenosine deaminase complexing protein 2; dipeptidylpeptidase IV (CD26, adenosine deaminase complexing protein 2); CD26; ADABP; ADCP2; TP103;
<b>Gene ID</b>	1803
<b>mRNA Refseq</b>	NM_001935
<b>Protein Refseq</b>	NP_001926
<b>MIM</b>	102720
<b>UniProt ID</b>	P27487

 Tel: 1-631-559-9269 1-516-512-3133

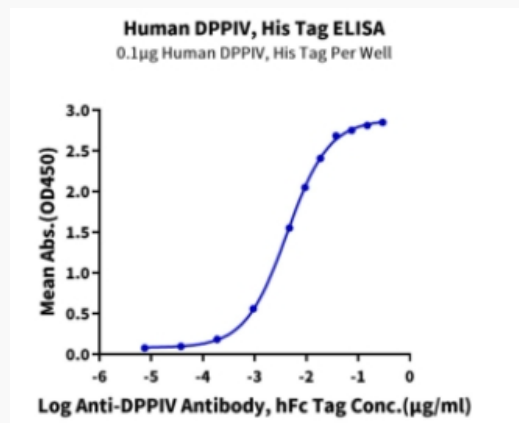
 Email: [info@creative-biomart.com](mailto:info@creative-biomart.com)  Fax: 1-631-938-8127

 45-1 Ramsey Road, Shirley, NY 11967, USA

Tris-Bis PAGE



ELISA Data



 Tel: 1-631-559-9269 1-516-512-3133

 Email: [info@creative-biomart.com](mailto:info@creative-biomart.com)  Fax: 1-631-938-8127

 45-1 Ramsey Road, Shirley, NY 11967, USA