

Recombinant Full Length Human DPP4 Protein, C-Flag-tagged

Cat. No. DPP4-797HFL Lot. No. (See product label)

SPECIFICATION

Product Overview	Recombinant Full Length Human DPP4 Protein, fused to Flag-tag at C-terminus, was expressed in Mammalian cells.
Species	Human
Source	Mammalian Cells
Description	<p>The DPP4 gene encodes dipeptidyl peptidase 4, which is identical to adenosine deaminase complexing protein-2, and to the T-cell activation antigen CD26. It is an intrinsic type II transmembrane glycoprotein and a serine exopeptidase that cleaves X-proline dipeptides from the N-terminus of polypeptides. Dipeptidyl peptidase 4 is highly involved in glucose and insulin metabolism, as well as in immune regulation. This protein was shown to be a functional receptor for Middle East respiratory syndrome coronavirus (MERS-CoV), and protein modeling suggests that it may play a similar role with SARS-CoV-2, the virus responsible for COVID-19.</p>
Form	25 mM Tris HCl, pH 7.3, 100 mM glycine, 10% glycerol.
Molecular Mass	88.1 kDa
AA Sequence	<p>MKTPWKVLLGLLGAAALVTIITVPVLLNKGTDATADSRKTYTLTDYLNKNTYRLKLY SLRWISDHEYLY KQENNILVFNAEYGNSSVFLENSTFDEFHGSINDYSISPDGQFILL EYNYVKQWRHSYASYDIYDLNKR QLITEERIPNNTQWWTWSPVGHKLAYVWNNDI YVKIEPNLPSYRITWTGKEDIYNGITDWVYEEVFSA YSALWWSPNGTFLAYAQFN DTEVPLIEYSFYSDSLQYPKTVRVPYPKAGAVNPTVKFFVNTDSLSSVT NATSIQI</p>

 Tel: 1-631-559-9269 1-516-512-3133

 Email: info@creative-biomart.com  Fax: 1-631-938-8127

 45-1 Ramsey Road, Shirley, NY 11967, USA

TAPASMLIGDHLYLCDVTWATQERISLQWLRRIQNYSVMDICDYDESSGRWNCLVAR
 QHIEMST TGWVGRFRPSEPHFTLDGNSFYKIISNEEGYRHICYFQIDKKDCTFITKGT
 WEVIGIEALTSYLYYISN EYKGMPPGGRNLYKIQLSDYTKVTCLSCELNPERCQYYS
 VSFSKEAKYYQLRCSGPGPLPLYTLHSSVNDKG LRVLEDNSALDKMLQNVQMPSKK
 LDFIILNETKFWYQMILPPHFDKSKKYPLLLDVYAGPCSQKADTVFR LNWATYLASTE
 NIIVASFDGRGSGYQGDKIMHAINRRLGTFEVEDQIEAARQFSKMGFVDNKRIAIWG
 WS YGGYVTSMVLGSGSGVFKCGIAVAPVSRWEYYDSVYTERYMGLPTPEDNLDH
 YRNSTVMSRAENFKQVEY LLIHGTADDNVHFQQSAQISKALVDVGVDFQAMWYTD
 EDHGIASSTAHQHIYTHMSHFQKCFSLPTRTRPLEQKLISEEDLAANDILDYKDDDD
 KV

Purity	> 80% as determined by SDS-PAGE and Coomassie blue staining.
Stability	Stable for 12 months from the date of receipt of the product under proper storage and handling conditions. Avoid repeated freeze-thaw cycles.
Storage	Store at -80 centigrade.
Concentration	>50 ug/mL as determined by microplate BCA method.
Preparation	Recombinant protein was captured through anti-DDK affinity column followed by conventional chromatography steps.
Protein Families	Druggable Genome, Protease, Secreted Protein, Transmembrane
Full Length	Full L.

GENE INFORMATION

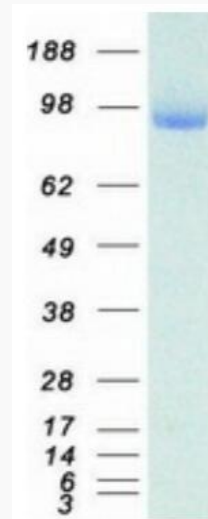
Gene Name [DPP4 dipeptidyl peptidase 4 \[Homo sapiens \(human\) \]](#)

 Tel: 1-631-559-9269 1-516-512-3133

 Email: info@creative-biomart.com  Fax: 1-631-938-8127

 45-1 Ramsey Road, Shirley, NY 11967, USA

Official Symbol	DPP4
Synonyms	CD26; ADABP; ADCP2; DPPIV; TP103
Gene ID	1803
mRNA Refseq	NM_001935.4
Protein Refseq	NP_001926.2
MIM	102720
UniProt ID	P27487



Coomassie blue staining of purified DPP4 protein.

 Tel: 1-631-559-9269 1-516-512-3133

 Email: info@creative-biomart.com  Fax: 1-631-938-8127

 45-1 Ramsey Road, Shirley, NY 11967, USA