

Recombinant Human DPP6 Protein, His tagged

Cat. No. DPP6-001H **Lot. No.** (See product label)

SPECIFICATION

| | |
|-------------------------|--|
| Product Overview | Recombinant Human DPP6 Protein (K120-D803, V458E) with His tag was expressed in HEK293T. |
| Species | Human |
| Source | HEK293T |
| ProteinLength | 120-803 aa |
| Description | This gene encodes a single-pass type II membrane protein that is a member of the peptidase S9B family of serine proteases. This protein has no detectable protease activity, most likely due to the absence of the conserved serine residue normally present in the catalytic domain of serine proteases. However, it does bind specific voltage-gated potassium channels and alters their expression and biophysical properties. Variations in this gene may be associated with susceptibility to amyotrophic lateral sclerosis and with idiopathic ventricular fibrillation. Alternative splicing results in multiple transcript variants. |
| Molecular Mass | 79 kDa |
| AASequence | KKIESLRAIRYEISPDREYALFSYNVEPIYQHSYTGYYVLSKIPHGDPQSLDPPEVSNA KLQYAGWGPKGQQLIFIFENNIYYCAHVGGKQAIRVVSTGKEGVIYNGLSDWLYEEEEIL KTHIAHWWSPDGTRLAYAAINDSRVPIMELPTYTGSIYPTVKPYHYPKAGSENPSISL HVIGLNGPTHDLEMMPPDDPRMREYYITMVKWATSTKVAVTWLNRAQNVSILTLCD ATTGVCTKKHEDESEAWLHRQNEEPVFSKDGRKFFFIRAIPQGGRGKIFYHITVSSSQ |

 Tel: 1-631-559-9269 1-516-512-3133

 Email: info@creative-biomart.com  Fax: 1-631-938-8127

 45-1 Ramsey Road, Shirley, NY 11967, USA

PNSSNDNIQSITSGDWDVTKILAYDEKGNKIYFLSTEDLPRRRQLYSANTVGNFNRQ
 CLSCDLVENCTYFSASFHSMDFLLKCEGPGVPMVTVHNTTDDKKKMFLETNEHV
 KKAINDRQMPKVEYRDIEIDDYNLPMQILKPATFTDTTHYPLLLVVDGTPGSQSVAEK
 FEVSWETVMVSSHGAVVVKCDGRGSGFQGTLLHEVRRRLGLLEEKDQMEAVRT
 MLKEQYIDRTRVAVFGKDYGGYLSTYILPAKGENQGQFTFCGSALSPITDFKLYASAF
 SERYLGLHGLDNRAYEMTKVAHRVSALEEQQFLIHPATADEKIHFAQHTAELITQLIRGK
 ANYSLQIYPDESHYFTSSSLKQHLYRSIINFFVECFRIQDKLPTVTAKEDEEEDHHHH
 HHHH

Endotoxin < 1 EU/μg by LAL

Purity >90% estimated by SDS-PAGE

Storage Store it under sterile conditions at -20 to -80 centigrade. It is recommended that the protein be aliquoted for optimal storage. Avoid repeated freeze-thaw cycles.

Storage Buffer Sterile PBS, pH7.4, 10% Glycerol, 5% Trehalose

Concentration 1 mg/mL by BCA

GENE INFORMATION

Gene Name DPP6 dipeptidyl-peptidase 6 [Homo sapiens (human)]

Official Symbol DPP6

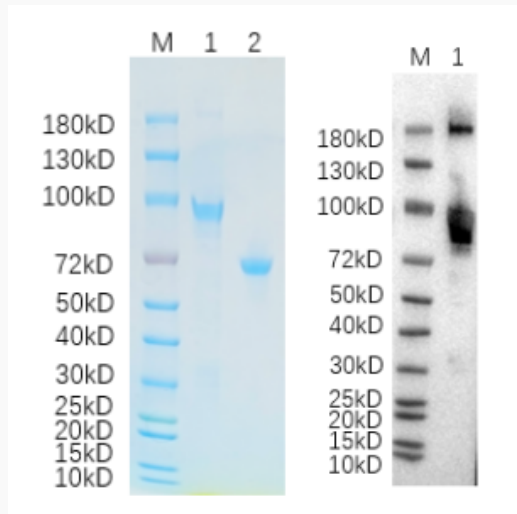
Synonyms DPP6; dipeptidyl-peptidase 6; dipeptidylpeptidase 6, dipeptidylpeptidase VI; dipeptidyl aminopeptidase-like protein 6; DPPX; DPP VI; dipeptidylpeptidase 6; dipeptidyl peptidase 6; dipeptidylpeptidase VI; dipeptidyl peptidase VI; dipeptidyl peptidase IV-like protein; dipeptidyl peptidase IV-related protein; dipeptidyl aminopeptidase-related protein; dipeptidyl aminopeptidase IV-related protein; VF2; FLJ55680; MGC46605

 Tel: 1-631-559-9269 1-516-512-3133

 Email: info@creative-biomart.com  Fax: 1-631-938-8127

 45-1 Ramsey Road, Shirley, NY 11967, USA

| | |
|-----------------------|--------------|
| Gene ID | 1804 |
| mRNA Refseq | NM_001039350 |
| Protein Refseq | NP_001034439 |
| MIM | 126141 |
| UniProt ID | P42658 |

SDS-PAGE and WB


Reducing 4%-20% SDS-PAGE (CBB stained) and WB (Anti-His Mouse Monoclonal antibody) analysis profiles of purified DPP6. 1. DPP6: 1 μ g 2. BSA: 1 μ g

 Tel: 1-631-559-9269 1-516-512-3133

 Email: info@creative-biomart.com  Fax: 1-631-938-8127

 45-1 Ramsey Road, Shirley, NY 11967, USA