

Recombinant Full Length Human DPP6 Protein, C-Flag-tagged

Cat. No. DPP6-1125HFL Lot. No. (See product label)

SPECIFICATION

Product Overview	Recombinant Full Length Human DPP6 Protein, fused to Flag-tag at C-terminus, was expressed in Mammalian cells.
Species	Human
Source	Mammalian Cells
Description	This gene encodes a single-pass type II membrane protein that is a member of the peptidase S9B family of serine proteases. This protein has no detectable protease activity, most likely due to the absence of the conserved serine residue normally present in the catalytic domain of serine proteases. However, it does bind specific voltage-gated potassium channels and alters their expression and biophysical properties. Variations in this gene may be associated with susceptibility to amyotrophic lateral sclerosis and with idiopathic ventricular fibrillation. Alternative splicing results in multiple transcript variants.
Form	25 mM Tris HCl, pH 7.3, 100 mM glycine, 10% glycerol.
Molecular Mass	97.4 kDa
AA Sequence	MASLYQRFTGKINTSRSPAPPEASHLLGGQGPEEDGGAGAKPLGPRAQAAAPRE RGGGGGGAGGRPRFQ YQARSDGDEEDELVGSNPPQRNWKGIAIALLVILVICSLIV TSVILLTPAEDNSLSQKKKVTVEDLFSFD FKIHDPEAKWISDTEFIYREQGTVRLWN VETNTSTVLIEGKKIESLRAIRYEISPDREYALFSYNVEPI YQHSYTGYYVLSKIPHGD PQSLDPPEVSNAKLQYAGWGPKGQQLIFENNIYYCAHVGVKQAIRVVSTGK EGVII

 Tel: 1-631-559-9269 1-516-512-3133

 Email: info@creative-biomart.com  Fax: 1-631-938-8127

 45-1 Ramsey Road, Shirley, NY 11967, USA

NGLSDWLYEEEILKTHIAHWWSPDGTRLAYAAINDSRVPIMELPTYTGSYPTVKPYH
 YPKAGSE NPSISLHVIGLNGPTHDLMMPPDDPRMREYYITMVKWATSTKVAVTWL
 NRAQNVSILTLCDATTGVCTK KHEDESEAWLHRQNEEPVFSKDGRKFFFIRAIPQG
 GRGKFYHITVSSSQPNSSNDNIQSITSGDWDVTKI LAYDEKGNKIYFLSTEDLPRRR
 QLYSANTVGNFNRQCLSCDLVENCTYFSASFHSMDFLLKCEGPGVP MVTVHNT
 TDKKKMFLETNEHVKKAINDRQMPKVEYRDIEIDDYNLPMQILKPATFTDTTHYPLL
 LVVDG TPGSQSVAEKFEVSWETVMVSSHGAVVVKCDGRGSGFQGTKLLHEVRRR
 LGLLEEKDQMEAVRMLKEQY IDRTRVAVFGKDYGGYLSTYILPAKGENQQQTFTC
 GSALSPITDFKLYASAFSERYLGLHGLDNRAYEMT KVAHRVSALEEQQFLIIHPTADE
 KIHFAQHTAELITQLIRGKANYSLQIYPDESHYFTSSSLKQHLYRSII
 NFFVECFRIQDKLPTVTAKEDEEEDTRTRPLEQKLISEEDLAANDILDYKDDDDKV

Purity > 80% as determined by SDS-PAGE and Coomassie blue staining.

Stability Stable for 12 months from the date of receipt of the product under proper storage and handling conditions. Avoid repeated freeze-thaw cycles.

Storage Store at -80 centigrade.

Concentration >50 ug/mL as determined by microplate BCA method.

Preparation Recombinant protein was captured through anti-DDK affinity column followed by conventional chromatography steps.

Protein Families Druggable Genome, Protease, Transmembrane

Full Length Full L.

GENE INFORMATION

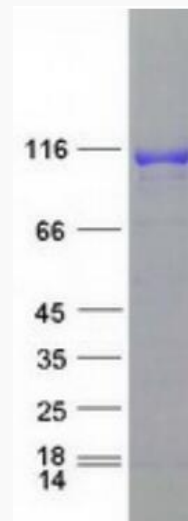
Gene Name [DPP6 dipeptidyl peptidase like 6 \[Homo sapiens \(human\) \]](#)

 Tel: 1-631-559-9269 1-516-512-3133

 Email: info@creative-biomart.com  Fax: 1-631-938-8127

 45-1 Ramsey Road, Shirley, NY 11967, USA

Official Symbol	DPP6
Synonyms	VF2; DPL1; DPPX; MRD33
Gene ID	1804
mRNA Refseq	NM_130797.4
Protein Refseq	NP_570629.2
MIM	126141
UniProt ID	P42658



Coomassie blue staining of purified DPP6 protein.

Tel: 1-631-559-9269 1-516-512-3133

Email: info@creative-biomart.com Fax: 1-631-938-8127

45-1 Ramsey Road, Shirley, NY 11967, USA