

Recombinant Rat DPP6 protein, His-tagged

Cat. No. DPP6-1945R Lot. No. (See product label)

SPECIFICATION

Product Overview	Recombinant Rat DPP6 protein (111-859 aa) is produced by E. coli expression system. This protein is fused with a His tag at the N-terminal.
Species	Rat
Source	E.coli
ProteinLength	111-859 aa
Description	Promotes cell surface expression of the potassium channel KCND2 . Modulates the activity and gating characteristics of the potassium channel KCND2 . Has no dipeptidyl aminopeptidase activity .
Form	Tris-based buffer,50% glycerol
Molecular Mass	89.6 kDa
AA Sequence	<p>LTPAEDTSLSQKKKVTVEDLFSDFKIHDPEAKWISDKEFIYRERKGSVILRNVETNN STVLIEGKKIESLRAIRYEISPDKEYALFSYNVEPVYQHSHTGYVLSKIPHGDPQSLD PPEVSNAKLQYAGWGPKGQQLIFENNIYYCAHVGVKQAIRVVSTGKEGVIYNGLSL WLYEEEILKSHIAHWWSPDGTRLAYATINDSRVPLMELPTYTGSVYPTVKPYHYPKA GSENPISLHVIGLNGPTHDLMMPPDDPRMREYYITMVKWATSTKVAVTWLNRAQ NVSILTCDATTGVCTKKHEDESEAWLHRQNEEPVFSKDGKRRKFFVRAIPQGGGRGK FYHITVSSSQPNSSNDNIQSITSGDWDVTEILTYDEKRNKLYFLSTEDLPRRRHLYSA NTVDDFNRQCLSCDLVENCYVSASFHNMDFLLKCEGPGVPTVTVHNTTDKRR</p>

 Tel: 1-631-559-9269 1-516-512-3133

 Email: info@creative-biomart.com  Fax: 1-631-938-8127

 45-1 Ramsey Road, Shirley, NY 11967, USA

MFDLEANEQVQKAIYDRQMPKIEYRKIEVEDYSLPMQILKPATFTDTAHYPLLLVVDG
 TPGSQSVSERFEVTWETVLVSSHGAVVVKCDGRGSGFQGTKLLHEVRRRLGFLEE
 KDQMEAVRMTLKEQYIDKTRVAVFGKDYGGYLSTYILPAKGENQQQTFTCGSALSPI
 TDFKLYASAFSERYLGLHGLDNRAYEMTKLAHRVSALEDQQFLIIHATADEKIHFAQHT
 AELITQLIKGKANYSLQIYPDESHYFHSVALKQHLYSIIGFFVECFRIQDKLPTATAKE
 DEEED

Purity > 90% as determined by SDS-PAGE.

Notes Repeated freezing and thawing is not recommended.

Stability Store working aliquots at 4 centigrade for up to one week.

Storage The shelf life is related to many factors, storage state, buffer ingredients, storage temperature and the stability of the protein itself.
 Generally, the shelf life of liquid form is 6 months at -20 centigrade/-80 centigrade.
 The shelf life of lyophilized form is 12 months at -20 centigrade/-80 centigrade.

GENE INFORMATION

Gene Name [Dpp6 dipeptidylpeptidase 6 \[Rattus norvegicus \]](#)

Official Symbol [DPP6](#)

Synonyms DPP6; DPPX; DPP VI;

Gene ID [29272](#)

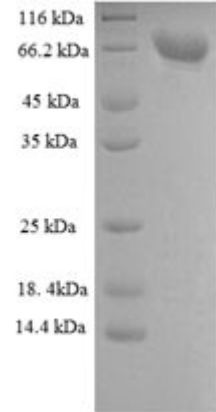
mRNA Refseq [NM_022850](#)

Protein Refseq [NP_074041](#)

 Tel: 1-631-559-9269 1-516-512-3133

 Email: info@creative-biomart.com  Fax: 1-631-938-8127

 45-1 Ramsey Road, Shirley, NY 11967, USA



(Tris-Glycine gel) Discontinuous SDS-PAGE (reduced) with 5% enrichment gel and 15% separation gel.

 Tel: 1-631-559-9269 1-516-512-3133

 Email: info@creative-biomart.com  Fax: 1-631-938-8127

 45-1 Ramsey Road, Shirley, NY 11967, USA