

## Recombinant Rat DPP6 protein, His-tagged

**Cat. No.** DPP6-1946R    **Lot. No.** (See product label)

### SPECIFICATION

<b>Product Overview</b>	Recombinant Rat DPP6 protein (111-859 aa) is produced by Yeast expression system. This protein is fused with a His tag at the N-terminal.
<b>Species</b>	Rat
<b>Source</b>	Yeast
<b>ProteinLength</b>	111-859 aa
<b>Form</b>	Tris-based buffer, 50% glycerol.
<b>Molecular Mass</b>	87.6 kDa
<b>AA Sequence</b>	<p>LTPAEDTSLSQKKKVTVEDLFSEDFKIHDPEAKWISDKEFIYRERKGSVILRNVETNN  STVLIEGKKIESLRAIRYEISPDKEYALFSYNVEPVYQHSHTGYVLSKIPHGDPQSLD  PPEVSNAKLQYAGWGPKGQQLIFIFENNIYYCAHV GKQAIRVVSTGKEGVIYNGLS D  WLYEEEILKSHIAHWWSPDGT RLAYATINDSRVPLMELPTYTGSVYPTVKPYHYPKA  GSENP S ISLHVIGLNGPTH DLEMMPPDDPRMREYYITMVKWATSTKVAVTWLNRAQ  NVSILTCDATTGVCTKKHEDESEAWLHRQNEEPVFSK DGRKFFFVRAIPQGGRGK  FYHITVSSSQPNSSNDNIQSITSGDWDVTEILTYDEKRNKLYFLSTEDLPRRRHLYSA  NTVDDFN RQCLSCDLVENCTYVSASF SHNMDFLLKCEGPGVPTVT VHNTT DKRR  MFDLEANEQVQKAIYDRQMPKIEYRKIEVEDYSLPMQILKPATFTDTAHYPLLLVVDG  TPGSQSVSERFEVTWETVLVSSHGAVVVKCDGRGSGFQGT KLLHEVRRRLGFLEE  KDQMEAVR TMLKEQYIDKTRVAVFGKDYGGYLSTYILPAKGENQGQTFTCGSALSPI  TDFKLYASAFSERYLGLHGLDN RAYEMTKLAHRVSALEDQQFLIIHATADEKIH FQHT</p>

 Tel: 1-631-559-9269    1-516-512-3133

 Email: [info@creative-biomart.com](mailto:info@creative-biomart.com)     Fax: 1-631-938-8127

 45-1 Ramsey Road, Shirley, NY 11967, USA

AELITQLIKGKANYSLQIYPDESHYFHSVALKQHLYRSIIGFFVECFRIQDKLPTATAKE  
DEEED

**Purity** > 90% as determined by SDS-PAGE.

**Notes** Repeated freezing and thawing is not recommended.

**Stability** Store working aliquots at 4 centigrade for up to one week.

**Storage** The shelf life is related to many factors, storage state, buffer ingredients, storage temperature and the stability of the protein itself. Generally, the shelf life of liquid form is 6 months at -20 centigrade/-80 centigrade. The shelf life of lyophilized form is 12 months at -20 centigrade/-80 centigrade.

## GENE INFORMATION

**Gene Name** [Dpp6 dipeptidylpeptidase 6 \[ Rattus norvegicus \]](#)

**Official Symbol** [DPP6](#)

**Synonyms** DPP6; DPPX; DPP VI;

**Gene ID** [29272](#)

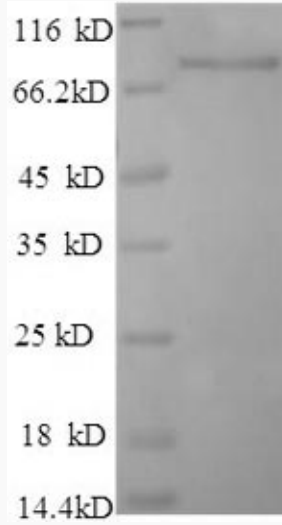
**mRNA Refseq** [NM\\_022850](#)

**Protein Refseq** [NP\\_074041](#)

 Tel: 1-631-559-9269 1-516-512-3133

 Email: [info@creative-biomart.com](mailto:info@creative-biomart.com)  Fax: 1-631-938-8127

 45-1 Ramsey Road, Shirley, NY 11967, USA



(Tris-Glycine gel) Discontinuous SDS-PAGE (reduced) with 5% enrichment gel and 15% separation gel.

 Tel: 1-631-559-9269 1-516-512-3133

 Email: [info@creative-biomart.com](mailto:info@creative-biomart.com)  Fax: 1-631-938-8127

 45-1 Ramsey Road, Shirley, NY 11967, USA